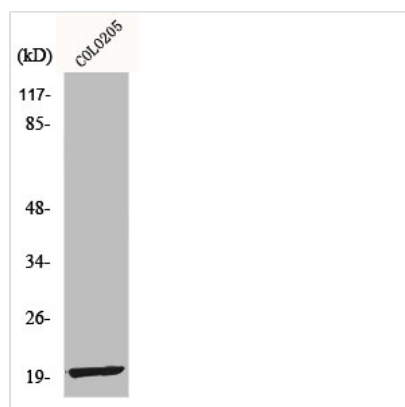




MRPL12 Antibody

Product Code	CSB-PA003285
Storage	Upon receipt, store at -20°C or -80°C. Avoid repeated freeze.
Uniprot No.	P52815
Immunogen	Synthesized peptide derived from the Internal region of Human MRP-L12.
Raised In	Rabbit
Species Reactivity	Human,Mouse
Tested Applications	WB, ELISA; WB:1:500-1:2000, ELISA:1:40000
Form	Liquid
Conjugate	Non-conjugated
Storage Buffer	Liquid in PBS containing 50% glycerol, 0.5% BSA and 0.02% sodium azide.
Purification Method	The antibody was affinity-purified from rabbit antiserum by affinity-chromatography using epitope-specific immunogen.
Isotype	IgG
Alias	MRPL12; RPML12; 39S ribosomal protein L12; mitochondrial; L12mt; MRP-L12; 5c5-2
Immunogen Species	Homo sapiens (Human)
Target Names	MRPL12

Image



Western Blot analysis of COLO205 cells using MRP-L12 Polyclonal Antibody