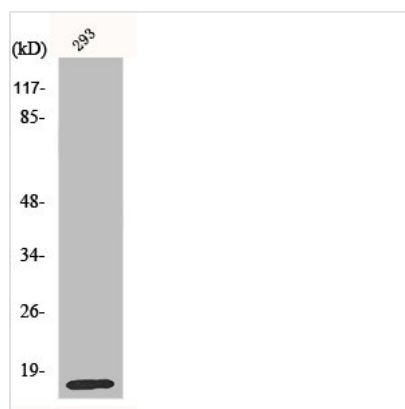




MRPL14 Antibody

Product Code	CSB-PA003287
Storage	Upon receipt, store at -20°C or -80°C. Avoid repeated freeze.
Uniprot No.	Q6P1L8
Immunogen	Synthesized peptide derived from the C-terminal region of Human MRP-L14.
Raised In	Rabbit
Species Reactivity	Human, Mouse, Rat
Tested Applications	WB, IHC, ELISA; WB:1:500-1:2000, IHC:1:100-1:300, ELISA:1:20000
Form	Liquid
Conjugate	Non-conjugated
Storage Buffer	Liquid in PBS containing 50% glycerol, 0.5% BSA and 0.02% sodium azide.
Purification Method	The antibody was affinity-purified from rabbit antiserum by affinity-chromatography using epitope-specific immunogen.
Isotype	IgG
Alias	MRPL14; MRPL32; RPML32; 39S ribosomal protein L14; mitochondrial; L14mt; MRP-L14; 39S ribosomal protein L32, mitochondrial; L32mt; MRP-L32
Immunogen Species	Homo sapiens (Human)
Target Names	MRPL14

Image



Western Blot analysis of COLO205 cells using MRP-L14 Polyclonal Antibody

Usage For Research Use Only. Not for use in diagnostic or therapeutic procedures.