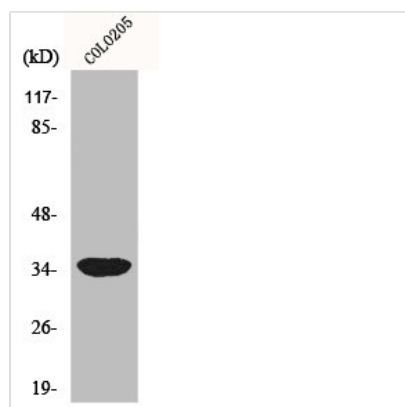




MRPL4 Antibody

Product Code	CSB-PA003295
Storage	Upon receipt, store at -20°C or -80°C. Avoid repeated freeze.
Uniprot No.	Q9BYD3
Immunogen	Synthesized peptide derived from the Internal region of Human MRP-L4.
Raised In	Rabbit
Species Reactivity	Human,Mouse
Tested Applications	WB, IHC, ELISA; WB:1:500-1:2000, IHC:1:100-1:300, ELISA:1:20000
Form	Liquid
Conjugate	Non-conjugated
Storage Buffer	Liquid in PBS containing 50% glycerol, 0.5% BSA and 0.02% sodium azide.
Purification Method	The antibody was affinity-purified from rabbit antiserum by affinity-chromatography using epitope-specific immunogen.
Isotype	IgG
Alias	MRPL4; CDABP0091; CGI-28; 39S ribosomal protein L4; mitochondrial; L4mt; MRP-L4
Immunogen Species	Homo sapiens (Human)
Target Names	MRPL4

Image



Western Blot analysis of COLO205 cells using MRP-L4 Polyclonal Antibody