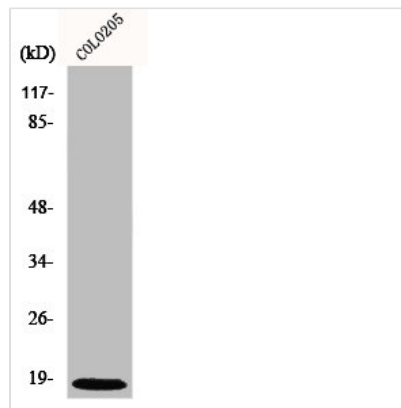




MRPL50 Antibody

Product Code	CSB-PA003300
Storage	Upon receipt, store at -20°C or -80°C. Avoid repeated freeze.
Uniprot No.	Q8N5N7
Immunogen	Synthesized peptide derived from the C-terminal region of Human MRP-L50.
Raised In	Rabbit
Species Reactivity	Human
Tested Applications	WB, ELISA; WB:1:500-1:2000, ELISA:1:20000
Form	Liquid
Conjugate	Non-conjugated
Storage Buffer	Liquid in PBS containing 50% glycerol, 0.5% BSA and 0.02% sodium azide.
Purification Method	The antibody was affinity-purified from rabbit antiserum by affinity-chromatography using epitope-specific immunogen.
Isotype	IgG
Alias	MRPL50; 39S ribosomal protein L50; mitochondrial; L50mt; MRP-L50
Immunogen Species	Homo sapiens (Human)
Target Names	MRPL50

Image



Western Blot analysis of HT29 cells using MRP-L50 Polyclonal Antibody

Usage

For Research Use Only. Not for use in diagnostic or therapeutic procedures.