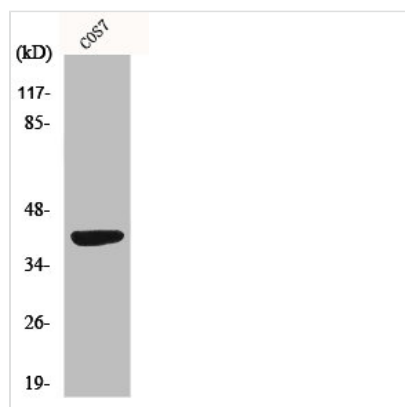




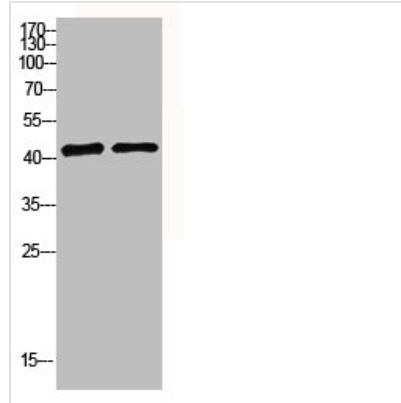
MRPS22 Antibody

Product Code	CSB-PA003308
Storage	Upon receipt, store at -20°C or -80°C. Avoid repeated freeze.
Uniprot No.	P82650
Immunogen	Synthesized peptide derived from the Internal region of Human MRP-S22.
Raised In	Rabbit
Species Reactivity	Human,Monkey
Tested Applications	WB, IHC, IF, ELISA; WB:1:500-1:2000, IHC:1:100-1:300, IF:1:200-1:1000, ELISA:1:40000
Form	Liquid
Conjugate	Non-conjugated
Storage Buffer	Liquid in PBS containing 50% glycerol, 0.5% BSA and 0.02% sodium azide.
Purification Method	The antibody was affinity-purified from rabbit antiserum by affinity-chromatography using epitope-specific immunogen.
Isotype	IgG
Alias	MRPS22; C3orf5; RPMS22; GK002; 28S ribosomal protein S22; mitochondrial; MRP-S22; S22mt
Immunogen Species	Homo sapiens (Human)
Target Names	MRPS22

Image



Western Blot analysis of COS7 cells using MRP-S22 Polyclonal Antibody



Western blot analysis of mouse-brain 293T lysis using MRP-S22 antibody.

Usage

For Research Use Only. Not for use in diagnostic or therapeutic procedures.