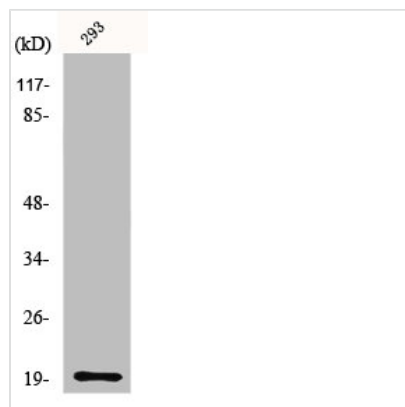




MRPS25 Antibody

Product Code	CSB-PA003309
Storage	Upon receipt, store at -20°C or -80°C. Avoid repeated freeze.
Uniprot No.	P82663
Immunogen	Synthesized peptide derived from the C-terminal region of Human MRP-S25.
Raised In	Rabbit
Species Reactivity	Human,Mouse,Rat
Tested Applications	WB, ELISA; WB:1:500-1:2000, ELISA:1:40000
Form	Liquid
Conjugate	Non-conjugated
Storage Buffer	Liquid in PBS containing 50% glycerol, 0.5% BSA and 0.02% sodium azide.
Purification Method	The antibody was affinity-purified from rabbit antiserum by affinity-chromatography using epitope-specific immunogen.
Isotype	IgG
Alias	MRPS25; RPMS25; 28S ribosomal protein S25; mitochondrial; MRP-S25; S25mt
Immunogen Species	Homo sapiens (Human)
Target Names	MRPS25

Image



Western Blot analysis of 293 cells using MRP-S25 Polyclonal Antibody