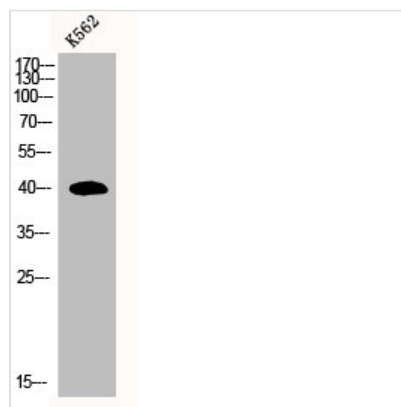




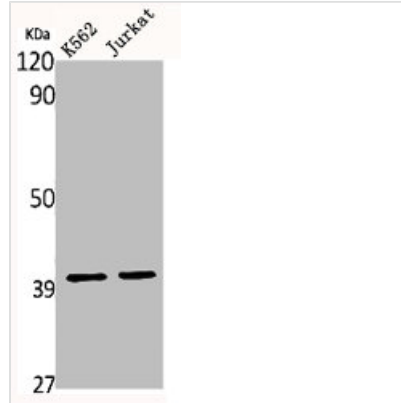
MRPS35 Antibody

Product Code	CSB-PA003314
Storage	Upon receipt, store at -20°C or -80°C. Avoid repeated freeze.
Uniprot No.	P82673
Immunogen	Synthesized peptide derived from the Internal region of Human MRP-S35.
Raised In	Rabbit
Species Reactivity	Human
Tested Applications	WB, IHC, ELISA; WB:1:500-1:2000, IHC:1:100-1:300, ELISA:1:40000
Form	Liquid
Conjugate	Non-conjugated
Storage Buffer	Liquid in PBS containing 50% glycerol, 0.5% BSA and 0.02% sodium azide.
Purification Method	The antibody was affinity-purified from rabbit antiserum by affinity-chromatography using epitope-specific immunogen.
Isotype	IgG
Alias	MRPS35; MRPS28; HDCMD11P; MDS023; PSEC0213; 28S ribosomal protein S35; mitochondrial; MRP-S35; S35mt; 28S ribosomal protein S28, mitochondrial; MRP-S28; S28mt
Immunogen Species	Homo sapiens (Human)
Target Names	MRPS35

Image



Western Blot analysis of K562 cells using MRP-S35 Polyclonal Antibody



Western Blot analysis of K562 Jurkat cells using MRP-S35 Polyclonal Antibody

Usage

For Research Use Only. Not for use in diagnostic or therapeutic procedures.