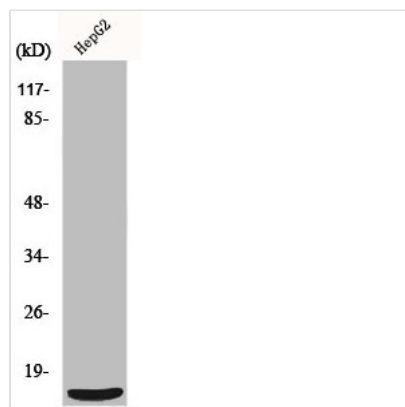




MRPS36 Antibody

Product Code	CSB-PA003315
Storage	Upon receipt, store at -20°C or -80°C. Avoid repeated freeze.
Uniprot No.	P82909
Immunogen	Synthesized peptide derived from the N-terminal region of Human MRP-S36.
Raised In	Rabbit
Species Reactivity	Human
Tested Applications	WB, IHC, ELISA; WB:1:500-1:2000, IHC:1:100-1:300, ELISA:1:10000
Form	Liquid
Conjugate	Non-conjugated
Storage Buffer	Liquid in PBS containing 50% glycerol, 0.5% BSA and 0.02% sodium azide.
Purification Method	The antibody was affinity-purified from rabbit antiserum by affinity-chromatography using epitope-specific immunogen.
Isotype	IgG
Alias	MRPS36; DC47; 28S ribosomal protein S36; mitochondrial; MRP-S36; S36mt
Immunogen Species	Homo sapiens (Human)
Target Names	MRPS36

Image



Western Blot analysis of HepG2 cells using MRP-S36 Polyclonal Antibody