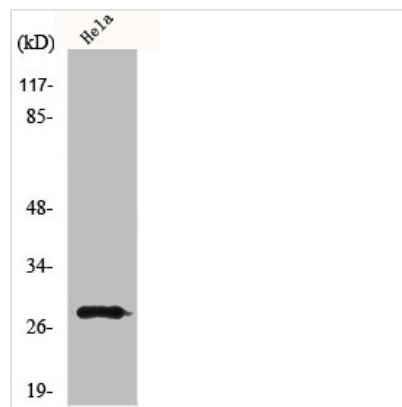




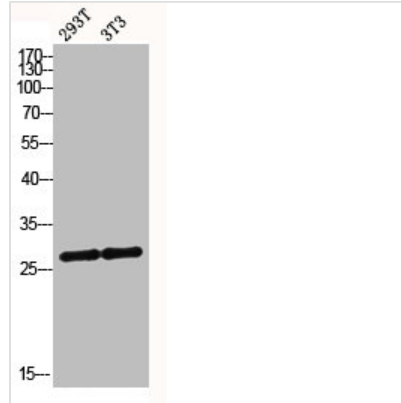
# MRRF Antibody

|                            |                                                                                                                       |
|----------------------------|-----------------------------------------------------------------------------------------------------------------------|
| <b>Product Code</b>        | CSB-PA003317                                                                                                          |
| <b>Storage</b>             | Upon receipt, store at -20°C or -80°C. Avoid repeated freeze.                                                         |
| <b>Uniprot No.</b>         | Q96E11                                                                                                                |
| <b>Immunogen</b>           | Synthesized peptide derived from the C-terminal region of Human MRRF.                                                 |
| <b>Raised In</b>           | Rabbit                                                                                                                |
| <b>Species Reactivity</b>  | Human,Mouse,Rat                                                                                                       |
| <b>Tested Applications</b> | WB, IHC, ELISA; WB:1:500-1:2000, IHC:1:100-1:300, ELISA:1:20000                                                       |
| <b>Form</b>                | Liquid                                                                                                                |
| <b>Conjugate</b>           | Non-conjugated                                                                                                        |
| <b>Storage Buffer</b>      | Liquid in PBS containing 50% glycerol, 0.5% BSA and 0.02% sodium azide.                                               |
| <b>Purification Method</b> | The antibody was affinity-purified from rabbit antiserum by affinity-chromatography using epitope-specific immunogen. |
| <b>Isotype</b>             | IgG                                                                                                                   |
| <b>Alias</b>               | MRRF; Ribosome-recycling factor; mitochondrial; RRF; Ribosome-releasing factor, mitochondrial                         |
| <b>Immunogen Species</b>   | Homo sapiens (Human)                                                                                                  |
| <b>Target Names</b>        | MRRF                                                                                                                  |

## Image



Western Blot analysis of HeLa cells using MRRF Polyclonal Antibody



Western blot analysis of 293T 3T3 lysis using MRRF antibody.

## Usage

For Research Use Only. Not for use in diagnostic or therapeutic procedures.