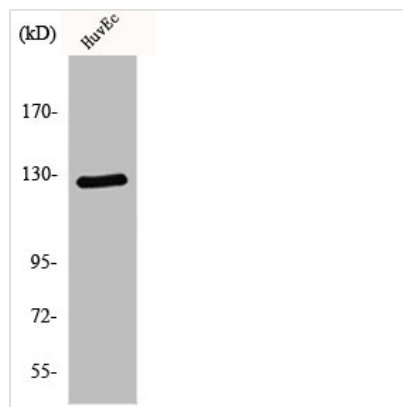




MSH3 Antibody

Product Code	CSB-PA003320
Storage	Upon receipt, store at -20°C or -80°C. Avoid repeated freeze.
Uniprot No.	P20585
Immunogen	Synthesized peptide derived from the N-terminal region of Human MSH3.
Raised In	Rabbit
Species Reactivity	Human
Tested Applications	WB, IHC, ELISA; WB:1:500-1:2000, IHC:1:100-1:300, ELISA:1:20000
Form	Liquid
Conjugate	Non-conjugated
Storage Buffer	Liquid in PBS containing 50% glycerol, 0.5% BSA and 0.02% sodium azide.
Purification Method	The antibody was affinity-purified from rabbit antiserum by affinity-chromatography using epitope-specific immunogen.
Isotype	IgG
Alias	MSH3; DUC1; DUG; DNA mismatch repair protein Msh3; hMSH3; Divergent upstream protein; DUP; Mismatch repair protein 1; MRP1
Immunogen Species	Homo sapiens (Human)
Target Names	MSH3

Image



Western Blot analysis of HuvEc cells using MSH3 Polyclonal Antibody

Usage

For Research Use Only. Not for use in diagnostic or therapeutic procedures.