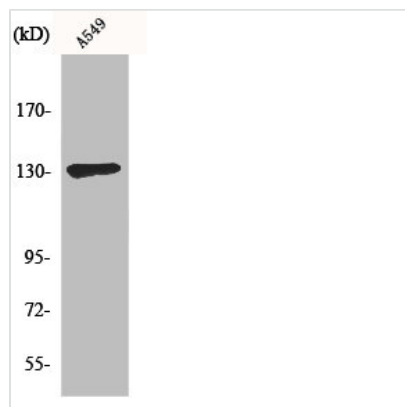




SIN3B Antibody

Product Code	CSB-PA003323
Storage	Upon receipt, store at -20°C or -80°C. Avoid repeated freeze.
Uniprot No.	O75182
Immunogen	Synthesized peptide derived from the Internal region of Human Sin3B.
Raised In	Rabbit
Species Reactivity	Human
Tested Applications	WB, IF, ELISA; WB:1:500-1:2000, IF:1:200-1:1000, ELISA:1:10000
Form	Liquid
Conjugate	Non-conjugated
Storage Buffer	Liquid in PBS containing 50% glycerol, 0.5% BSA and 0.02% sodium azide.
Purification Method	The antibody was affinity-purified from rabbit antiserum by affinity-chromatography using epitope-specific immunogen.
Isotype	IgG
Alias	SIN3B; KIAA0700; Paired amphipathic helix protein Sin3b; Histone deacetylase complex subunit Sin3b; Transcriptional corepressor Sin3b
Immunogen Species	Homo sapiens (Human)
Target Names	SIN3B

Image



Western Blot analysis of A549 cells using Sin3B Polyclonal Antibody

Usage

For Research Use Only. Not for use in diagnostic or therapeutic procedures.