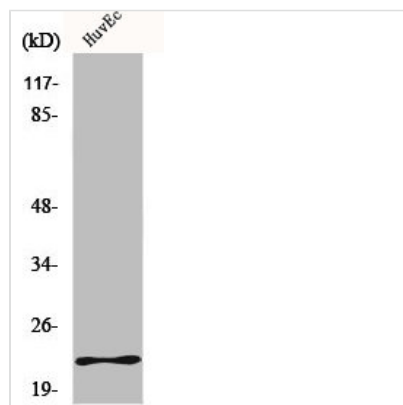




MYL3 Antibody

| | |
|----------------------------|--|
| Product Code | CSB-PA003345 |
| Storage | Upon receipt, store at -20°C or -80°C. Avoid repeated freeze. |
| Uniprot No. | P08590 |
| Immunogen | Synthesized peptide derived from the Internal region of Human MYL3. |
| Raised In | Rabbit |
| Species Reactivity | Human |
| Tested Applications | WB, ELISA; WB:1:500-1:2000, ELISA:1:20000 |
| Form | Liquid |
| Conjugate | Non-conjugated |
| Storage Buffer | Liquid in PBS containing 50% glycerol, 0.5% BSA and 0.02% sodium azide. |
| Purification Method | The antibody was affinity-purified from rabbit antiserum by affinity-chromatography using epitope-specific immunogen. |
| Isotype | IgG |
| Alias | MYL3; Myosin light chain 3; Cardiac myosin light chain 1; CMLC1; Myosin light chain 1; slow-twitch muscle B/ventricular isoform; MLC1SB; Ventricular/slow twitch myosin alkali light chain |
| Immunogen Species | Homo sapiens (Human) |
| Target Names | MYL3 |

Image



Western Blot analysis of Jurkat cells using MYL3 Polyclonal Antibody