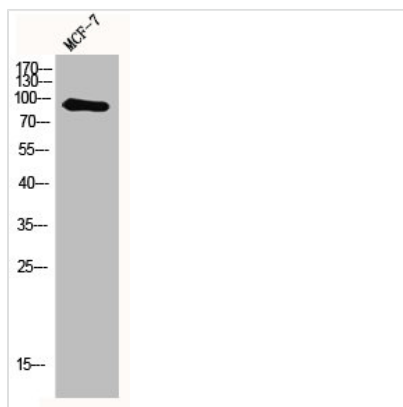




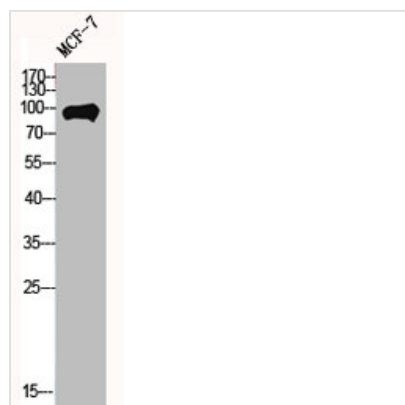
MYSM1 Antibody

Product Code	CSB-PA003355
Storage	Upon receipt, store at -20°C or -80°C. Avoid repeated freeze.
Uniprot No.	Q5VVJ2
Immunogen	Synthesized peptide derived from the Internal region of Human MYSM1.
Raised In	Rabbit
Species Reactivity	Human
Tested Applications	WB, IHC, ELISA; WB:1:500-1:2000, IHC:1:100-1:300, ELISA:1:40000
Form	Liquid
Conjugate	Non-conjugated
Storage Buffer	Liquid in PBS containing 50% glycerol, 0.5% BSA and 0.02% sodium azide.
Purification Method	The antibody was affinity-purified from rabbit antiserum by affinity-chromatography using epitope-specific immunogen.
Isotype	IgG
Alias	MYSM1; KIAA1915; Histone H2A deubiquitinase MYSM1; 2A-DUB; Myb-like; SWIRM and MPN domain-containing protein 1
Immunogen Species	Homo sapiens (Human)
Target Names	MYSM1

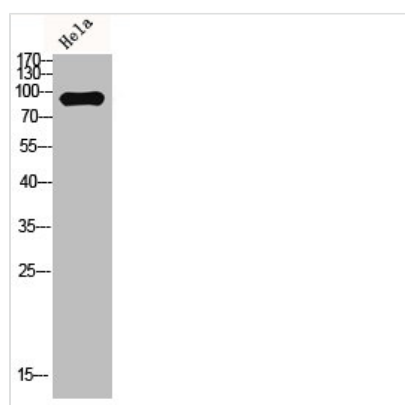
Image



Western Blot analysis of MCF7 cells using MYSM1 Polyclonal Antibody



Western Blot analysis of MCF7 cells using MYSM1 Polyclonal Antibody



Western blot analysis of HeLa lysis using MYSM1 antibody.