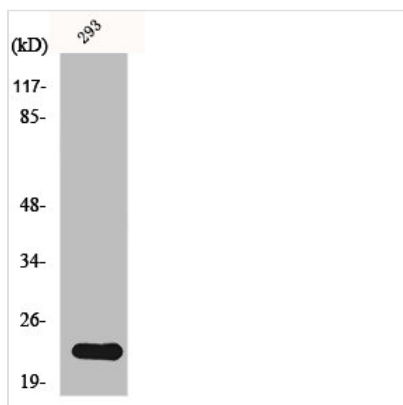




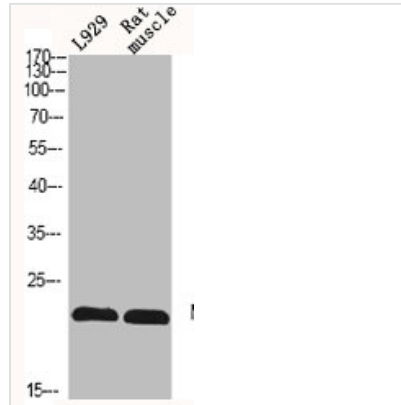
# NRAS/HRAS/KRAS Antibody

<b>Product Code</b>	CSB-PA003358
<b>Storage</b>	Upon receipt, store at -20°C or -80°C. Avoid repeated freeze.
<b>Uniprot No.</b>	P01111/P01112/P01116
<b>Immunogen</b>	Synthesized peptide derived from the N-terminal region of Human N/H/K-Ras.
<b>Raised In</b>	Rabbit
<b>Species Reactivity</b>	Human, Mouse, Rat
<b>Tested Applications</b>	WB, IHC, ELISA; WB:1:500-1:2000, IHC:1:100-1:300, ELISA:1:20000
<b>Form</b>	Liquid
<b>Conjugate</b>	Non-conjugated
<b>Storage Buffer</b>	Liquid in PBS containing 50% glycerol, 0.5% BSA and 0.02% sodium azide.
<b>Purification Method</b>	The antibody was affinity-purified from rabbit antiserum by affinity-chromatography using epitope-specific immunogen.
<b>Isotype</b>	IgG
<b>Alias</b>	NRAS; HRAS1; GTPase NRas; Transforming protein N-Ras; HRAS; HRAS1; GTPase HRas; H-Ras-1; Ha-Ras; Transforming protein p21; c-H-ras; p21ras; KRAS; KRAS2; RASK2; GTPase KRas; K-Ras 2; Ki-Ras; c-K-ras; c-Ki-ras
<b>Immunogen Species</b>	Homo sapiens (Human)
<b>Target Names</b>	NRAS/HRAS/KRAS

## Image



Western Blot analysis of 293 cells using N/H/K-Ras Polyclonal Antibody



Western Blot analysis of L929 RAT-MUSLCE cells using N/H/K-Ras Polyclonal Antibody

**Usage**

For Research Use Only. Not for use in diagnostic or therapeutic procedures.