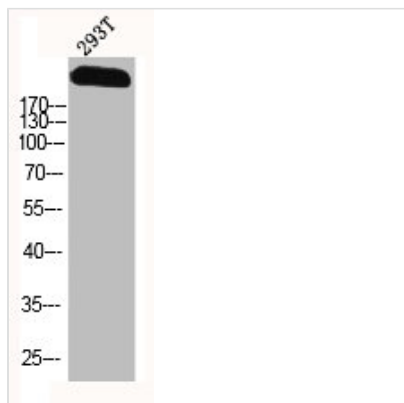




SCN9A Antibody

Product Code	CSB-PA003362
Storage	Upon receipt, store at -20°C or -80°C. Avoid repeated freeze.
Uniprot No.	Q15858
Immunogen	Synthesized peptide derived from the Internal region of Human Na ⁺ CP type IX α .
Raised In	Rabbit
Species Reactivity	Human, Mouse, Rat
Tested Applications	WB, IHC, ELISA; WB:1:500-1:2000, IHC:1:100-1:300, ELISA:1:40000
Form	Liquid
Conjugate	Non-conjugated
Storage Buffer	Liquid in PBS containing 50% glycerol, 0.5% BSA and 0.02% sodium azide.
Purification Method	The antibody was affinity-purified from rabbit antiserum by affinity-chromatography using epitope-specific immunogen.
Isotype	IgG
Alias	SCN9A; NENA; Sodium channel protein type 9 subunit alpha; Neuroendocrine sodium channel; hNE-Na; Peripheral sodium channel 1; PN1; Sodium channel protein type IX subunit alpha; Voltage-gated sodium channel subunit alpha Nav1.7
Immunogen Species	Homo sapiens (Human)
Target Names	SCN9A

Image



Western Blot analysis of 293T cells using Na⁺ CP type IX α Polyclonal Antibody

Usage

For Research Use Only. Not for use in diagnostic or therapeutic procedures.