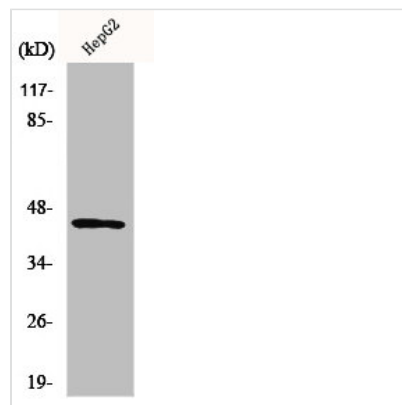




AZI2 Antibody

Product Code	CSB-PA003368
Storage	Upon receipt, store at -20°C or -80°C. Avoid repeated freeze.
Uniprot No.	Q9H6S1
Immunogen	Synthesized peptide derived from the N-terminal region of Human Nap1.
Raised In	Rabbit
Species Reactivity	Human,Mouse,Rat
Tested Applications	WB, IHC, IF, ELISA; WB:1:500-1:2000, IHC:1:100-1:300, IF:1:200-1:1000, ELISA:1:20000
Form	Liquid
Conjugate	Non-conjugated
Storage Buffer	Liquid in PBS containing 50% glycerol, 0.5% BSA and 0.02% sodium azide.
Purification Method	The antibody was affinity-purified from rabbit antiserum by affinity-chromatography using epitope-specific immunogen.
Isotype	IgG
Alias	AZI2; NAP1; 5-azacytidine-induced protein 2; NF-kappa-B-activating kinase-associated protein 1; Nak-associated protein 1; TILP
Immunogen Species	Homo sapiens (Human)
Target Names	AZI2

Image



Western Blot analysis of HepG2 cells using Nap1 Polyclonal Antibody

Usage For Research Use Only. Not for use in diagnostic or therapeutic procedures.