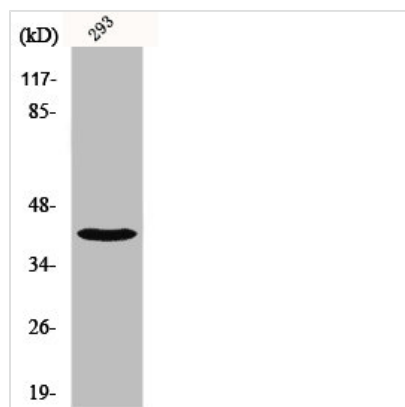




NBPF1/NBPF9/NBPF10/NBPF12/NBPF14/NBPF15/NBPF16/NBPF20 Antibody

Product Code	CSB-PA003377
Storage	Upon receipt, store at -20°C or -80°C. Avoid repeated freeze.
Uniprot No.	Q5TAG4/Q6P3W6/Q5SXJ2/Q3BBV0/Q3BBW0/Q3BBV1/Q8N660/Q5TI25
Immunogen	Synthesized peptide derived from the C-terminal region of Human NBPF1/9/10/12/14/15/16/20.
Raised In	Rabbit
Species Reactivity	Human
Tested Applications	WB, IHC, ELISA; WB:1:500-1:2000, IHC:1:100-1:300, ELISA:1:40000
Form	Liquid
Conjugate	Non-conjugated
Storage Buffer	Liquid in PBS containing 50% glycerol, 0.5% BSA and 0.02% sodium azide.
Purification Method	The antibody was affinity-purified from rabbit antiserum by affinity-chromatography using epitope-specific immunogen.
Isotype	IgG
Alias	NBPF12; COAS1; KIAA1245; Neuroblastoma breakpoint family member 12; Chromosome 1 amplified sequence 1; NBPF10; Neuroblastoma breakpoint family member 10; NBPF16; Neuroblastoma breakpoint family member 16; NBPF1; KIAA1693; Neuroblastoma brea
Immunogen Species	Homo sapiens (Human)
Target Names	NBPF12/NBPF10/NBPF1/NBPF9/NBPF20/NBPF15/NBPF14

Image



Western Blot analysis of 293 cells using NBPF1/9/10/12/14/15/16/20 Polyclonal Antibody

Usage

For Research Use Only. Not for use in diagnostic or therapeutic procedures.