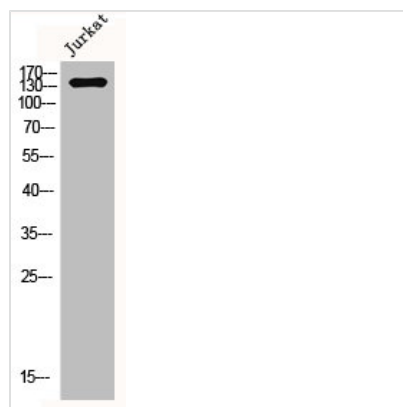




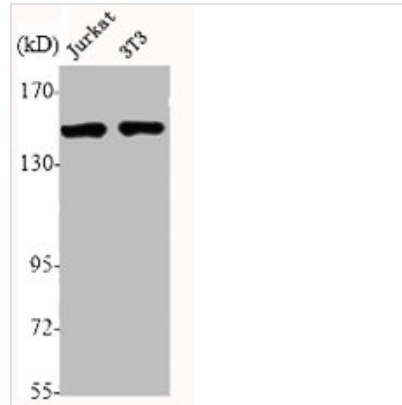
L1CAM Antibody

Product Code	CSB-PA003380
Storage	Upon receipt, store at -20°C or -80°C. Avoid repeated freeze.
Uniprot No.	P32004
Immunogen	Synthesized peptide derived from Human NCAM-L1 around the non-phosphorylation site of S1181.
Raised In	Rabbit
Species Reactivity	Human,Mouse,Rat
Tested Applications	WB, IHC, IF, ELISA; WB:1:500-1:2000, IHC:1:100-1:300, IF:1:200-1:1000, ELISA:1:20000
Form	Liquid
Conjugate	Non-conjugated
Storage Buffer	Liquid in PBS containing 50% glycerol, 0.5% BSA and 0.02% sodium azide.
Purification Method	The antibody was affinity-purified from rabbit antiserum by affinity-chromatography using epitope-specific immunogen.
Isotype	IgG
Alias	L1CAM; CAML1; MIC5; Neural cell adhesion molecule L1; N-CAM-L1; NCAM-L1; CD antigen CD171
Immunogen Species	Homo sapiens (Human)
Target Names	L1CAM

Image



Western Blot analysis of Jurkat cells using NCAM-L1 Polyclonal Antibody



Western Blot analysis of Jurkat NIH-3T3 cells using NCAM-L1 Polyclonal Antibody

Usage

For Research Use Only. Not for use in diagnostic or therapeutic procedures.