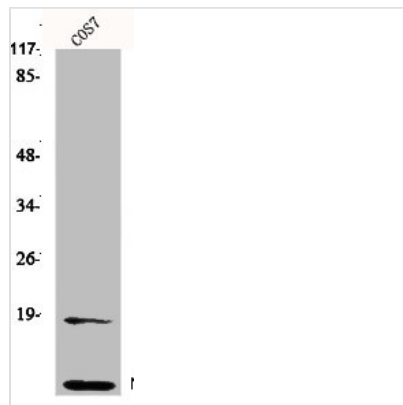




NEDD8 Antibody

| | |
|----------------------------|--|
| Product Code | CSB-PA003391 |
| Storage | Upon receipt, store at -20°C or -80°C. Avoid repeated freeze. |
| Uniprot No. | Q15843 |
| Immunogen | Synthesized peptide derived from the N-terminal region of Human Neddylin. |
| Raised In | Rabbit |
| Species Reactivity | Human, Mouse, Rat, Monkey |
| Tested Applications | WB, IHC, ELISA; WB:1:500-1:2000, IHC:1:100-1:300, ELISA:1:5000 |
| Form | Liquid |
| Conjugate | Non-conjugated |
| Storage Buffer | Liquid in PBS containing 50% glycerol, 0.5% BSA and 0.02% sodium azide. |
| Purification Method | The antibody was affinity-purified from rabbit antiserum by affinity-chromatography using epitope-specific immunogen. |
| Isotype | IgG |
| Alias | NEDD8; NEDD8; Neddylin; Neural precursor cell expressed developmentally down-regulated protein 8; NEDD-8; Ubiquitin-like protein Nedd8 |
| Immunogen Species | Homo sapiens (Human) |
| Target Names | NEDD8 |

Image



Western Blot analysis of HepG2 cells using Neddylin Polyclonal Antibody

Usage

For Research Use Only. Not for use in diagnostic or therapeutic procedures.