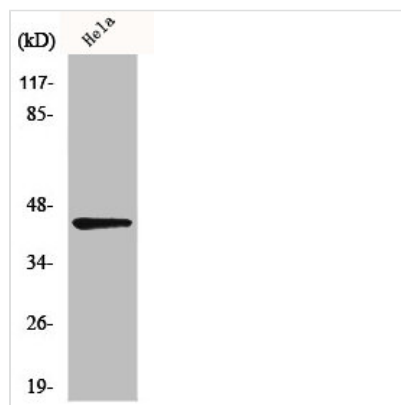




NEIL1 Antibody

Product Code	CSB-PA003395
Storage	Upon receipt, store at -20°C or -80°C. Avoid repeated freeze.
Uniprot No.	Q96FI4
Immunogen	Synthesized peptide derived from the C-terminal region of Human NEIL1.
Raised In	Rabbit
Species Reactivity	Human
Tested Applications	WB, ELISA; WB:1:500-1:2000, ELISA:1:20000
Form	Liquid
Conjugate	Non-conjugated
Storage Buffer	Liquid in PBS containing 50% glycerol, 0.5% BSA and 0.02% sodium azide.
Purification Method	The antibody was affinity-purified from rabbit antiserum by affinity-chromatography using epitope-specific immunogen.
Isotype	IgG
Alias	NEIL1; Endonuclease 8-like 1; DNA glycosylase/AP lyase Neil1; DNA-(apurinic or apyrimidinic site) lyase Neil1; Endonuclease VIII-like 1; FPG1; Nei homolog 1; NEH1; Nei-like protein 1
Immunogen Species	Homo sapiens (Human)
Target Names	NEIL1

Image



Western Blot analysis of HeLa cells using NEIL1 Polyclonal Antibody

Usage For Research Use Only. Not for use in diagnostic or therapeutic procedures.