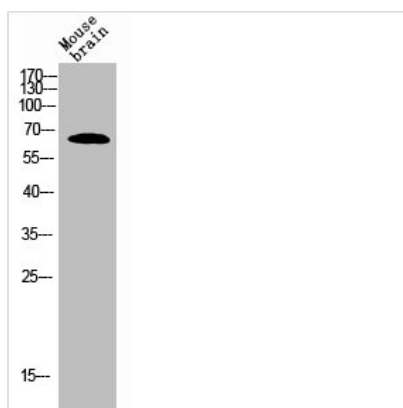




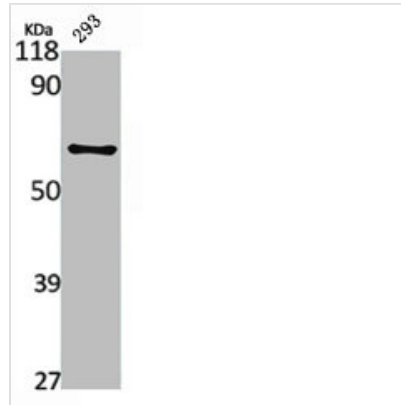
RELA Antibody

Product Code	CSB-PA003437
Storage	Upon receipt, store at -20°C or -80°C. Avoid repeated freeze.
Uniprot No.	Q04206
Immunogen	Synthesized peptide derived from Human NFκB-p65 around the non-acetylation site of K310.
Raised In	Rabbit
Species Reactivity	Human,Mouse,Monkey
Tested Applications	WB, IHC, IF, ELISA; WB:1:500-1:2000, IHC:1:100-1:300, IF:1:200-1:1000, ELISA:1:10000
Form	Liquid
Conjugate	Non-conjugated
Storage Buffer	Liquid in PBS containing 50% glycerol, 0.5% BSA and 0.02% sodium azide.
Purification Method	The antibody was affinity-purified from rabbit antiserum by affinity-chromatography using epitope-specific immunogen.
Isotype	IgG
Alias	RELA; NFKB3; Transcription factor p65; Nuclear factor NF-kappa-B p65 subunit; Nuclear factor of kappa light polypeptide gene enhancer in B-cells 3
Immunogen Species	Homo sapiens (Human)
Target Names	RELA

Image



Western Blot analysis of MOUSE-BRAIN cells using NFκB-p65 Polyclonal Antibody



Western Blot analysis of 293 cells using NFκB-p65 Polyclonal Antibody

Usage

For Research Use Only. Not for use in diagnostic or therapeutic procedures.