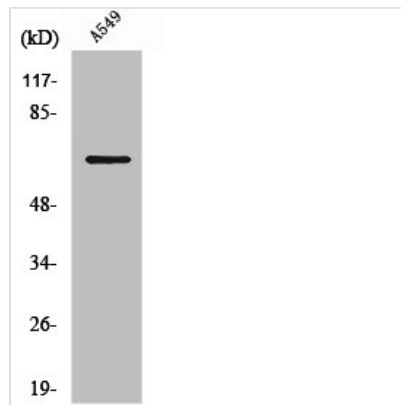




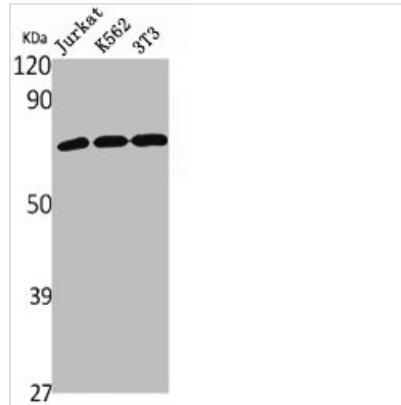
SLC9A9 Antibody

Product Code	CSB-PA003449
Storage	Upon receipt, store at -20°C or -80°C. Avoid repeated freeze.
Uniprot No.	Q8IVB4
Immunogen	Synthesized peptide derived from the Internal region of Human NHE-9.
Raised In	Rabbit
Species Reactivity	Human, Mouse
Tested Applications	WB, ELISA; WB:1:500-1:2000, ELISA:1:40000
Form	Liquid
Conjugate	Non-conjugated
Storage Buffer	Liquid in PBS containing 50% glycerol, 0.5% BSA and 0.02% sodium azide.
Purification Method	The antibody was affinity-purified from rabbit antiserum by affinity-chromatography using epitope-specific immunogen.
Isotype	IgG
Alias	SLC9A9; NHE9; Nbla00118; Sodium/hydrogen exchanger 9; Na(+)/H(+) exchanger 9; NHE-9; Solute carrier family 9 member 9
Immunogen Species	Homo sapiens (Human)
Target Names	SLC9A9

Image



Western Blot analysis of RAW264.7 cells using NHE-9 Polyclonal Antibody



Western Blot analysis of Jurkat K562 NIH-3T3 cells using NHE-9 Polyclonal Antibody

Usage

For Research Use Only. Not for use in diagnostic or therapeutic procedures.