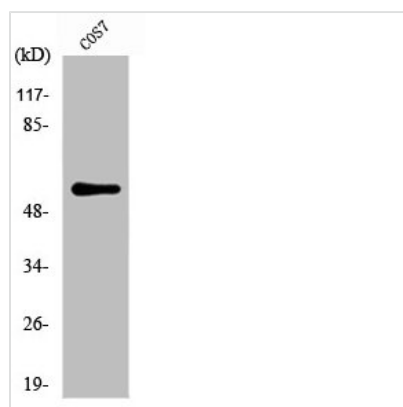




ZC3HC1 Antibody

Product Code	CSB-PA003452
Storage	Upon receipt, store at -20°C or -80°C. Avoid repeated freeze.
Uniprot No.	Q86WB0
Immunogen	Synthesized peptide derived from Human NIPA around the non-phosphorylation site of S354.
Raised In	Rabbit
Species Reactivity	Human,Mouse,Rat,Monkey
Tested Applications	WB, IF, ELISA; WB:1:500-1:2000, IF:1:200-1:1000, ELISA:1:40000
Form	Liquid
Conjugate	Non-conjugated
Storage Buffer	Liquid in PBS containing 50% glycerol, 0.5% BSA and 0.02% sodium azide.
Purification Method	The antibody was affinity-purified from rabbit antiserum by affinity-chromatography using epitope-specific immunogen.
Isotype	IgG
Alias	ZC3HC1; NIPA; HSPC216; Nuclear-interacting partner of ALK; Nuclear-interacting partner of anaplastic lymphoma kinase; hNIPA; Zinc finger C3HC-type protein 1
Immunogen Species	Homo sapiens (Human)
Target Names	ZC3HC1

Image



Western Blot analysis of COS7 cells using NIPA Polyclonal Antibody

Usage For Research Use Only. Not for use in diagnostic or therapeutic procedures.