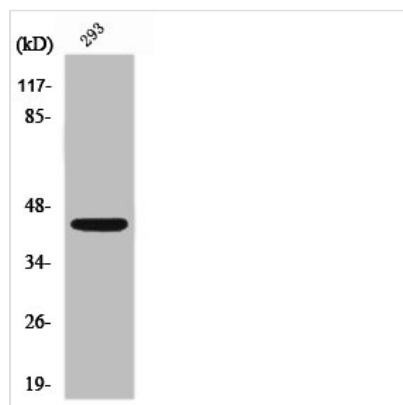




NCR1 Antibody

Product Code	CSB-PA003455
Storage	Upon receipt, store at -20°C or -80°C. Avoid repeated freeze.
Uniprot No.	O76036
Immunogen	Synthesized peptide derived from the Internal region of Human NKp46.
Raised In	Rabbit
Species Reactivity	Human
Tested Applications	WB, ELISA; WB:1:500-1:2000, ELISA:1:10000
Form	Liquid
Conjugate	Non-conjugated
Storage Buffer	Liquid in PBS containing 50% glycerol, 0.5% BSA and 0.02% sodium azide.
Purification Method	The antibody was affinity-purified from rabbit antiserum by affinity-chromatography using epitope-specific immunogen.
Isotype	IgG
Alias	NCR1; LY94; Natural cytotoxicity triggering receptor 1; Lymphocyte antigen 94 homolog; NK cell-activating receptor; Natural killer cell p46-related protein; NK-p46; NKp46; hNKp46; CD antigen CD335
Immunogen Species	Homo sapiens (Human)
Target Names	NCR1

Image



Western Blot analysis of A549 cells using NKp46 Polyclonal Antibody