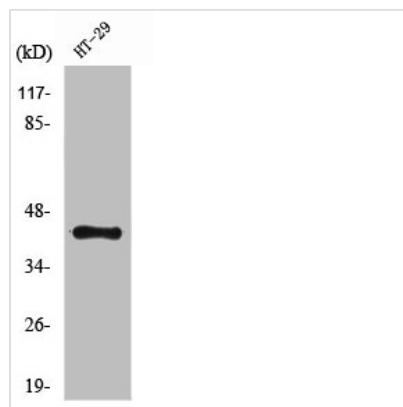




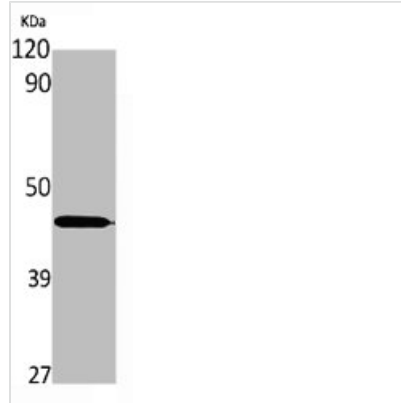
NPY2R Antibody

Product Code	CSB-PA003472
Storage	Upon receipt, store at -20°C or -80°C. Avoid repeated freeze.
Uniprot No.	P49146
Immunogen	Synthesized peptide derived from the N-terminal region of Human NPY2-R.
Raised In	Rabbit
Species Reactivity	Human,Mouse,Rat
Tested Applications	WB, IF, ELISA; WB:1:500-1:2000, IF:1:200-1:1000, ELISA:1:5000
Form	Liquid
Conjugate	Non-conjugated
Storage Buffer	Liquid in PBS containing 50% glycerol, 0.5% BSA and 0.02% sodium azide.
Purification Method	The antibody was affinity-purified from rabbit antiserum by affinity-chromatography using epitope-specific immunogen.
Isotype	IgG
Alias	NPY2R; Neuropeptide Y receptor type 2; NPY2-R; NPY-Y2 receptor; Y2 receptor
Immunogen Species	Homo sapiens (Human)
Target Names	NPY2R

Image



Western Blot analysis of HT29 cells using NPY2-R Polyclonal Antibody



Western Blot analysis of various cells using NPY2-R Polyclonal Antibody

Usage

For Research Use Only. Not for use in diagnostic or therapeutic procedures.