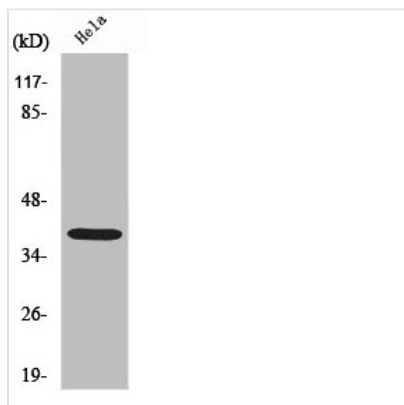




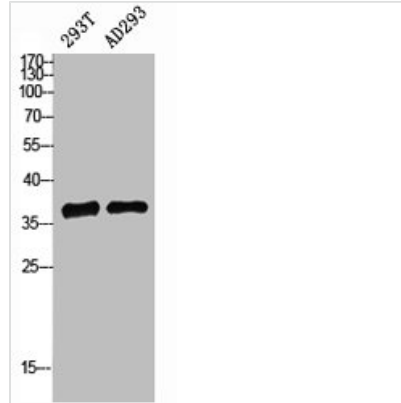
NPM1 Antibody

Product Code	CSB-PA003492
Storage	Upon receipt, store at -20°C or -80°C. Avoid repeated freeze.
Uniprot No.	P06748
Immunogen	Synthesized peptide derived from the N-terminal region of Human Nucleophosmin.
Raised In	Rabbit
Species Reactivity	Human,Mouse,Rat,Monkey
Tested Applications	WB, IHC, ELISA; WB:1:500-1:2000, IHC:1:100-1:300, ELISA:1:10000
Form	Liquid
Conjugate	Non-conjugated
Storage Buffer	Liquid in PBS containing 50% glycerol, 0.5% BSA and 0.02% sodium azide.
Purification Method	The antibody was affinity-purified from rabbit antiserum by affinity-chromatography using epitope-specific immunogen.
Isotype	IgG
Alias	NPM1; NPM; Nucleophosmin; NPM; Nucleolar phosphoprotein B23; Nucleolar protein NO38; Numatrin
Immunogen Species	Homo sapiens (Human)
Target Names	NPM1

Image



Western Blot analysis of COS7 cells using Nucleophosmin Polyclonal Antibody



Western Blot analysis of 293 AD293 cells using Nucleophosmin Polyclonal Antibody

Usage

For Research Use Only. Not for use in diagnostic or therapeutic procedures.