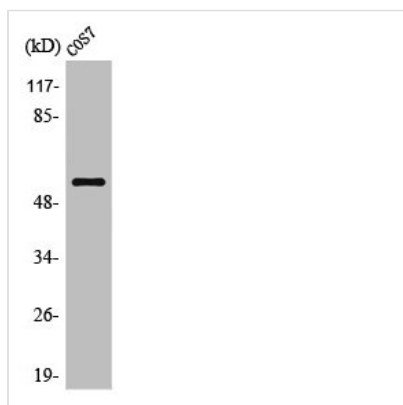




OPCML Antibody

Product Code	CSB-PA003499
Storage	Upon receipt, store at -20°C or -80°C. Avoid repeated freeze.
Uniprot No.	Q14982
Immunogen	Synthesized peptide derived from the Internal region of Human OBCAM.
Raised In	Rabbit
Species Reactivity	Human, Mouse, Rat, Monkey
Tested Applications	WB, ELISA; WB:1:500-1:2000, ELISA:1:10000
Form	Liquid
Conjugate	Non-conjugated
Storage Buffer	Liquid in PBS containing 50% glycerol, 0.5% BSA and 0.02% sodium azide.
Purification Method	The antibody was affinity-purified from rabbit antiserum by affinity-chromatography using epitope-specific immunogen.
Isotype	IgG
Alias	OPCML; IGLON1; OBCAM; Opioid-binding protein/cell adhesion molecule; OBCAM; OPCML; Opioid-binding cell adhesion molecule; IgLON family member 1
Immunogen Species	Homo sapiens (Human)
Target Names	OPCML

Image



Western Blot analysis of COS7 cells using OBCAM Polyclonal Antibody

Usage For Research Use Only. Not for use in diagnostic or therapeutic procedures.