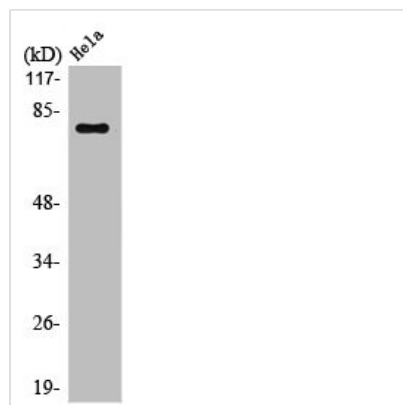




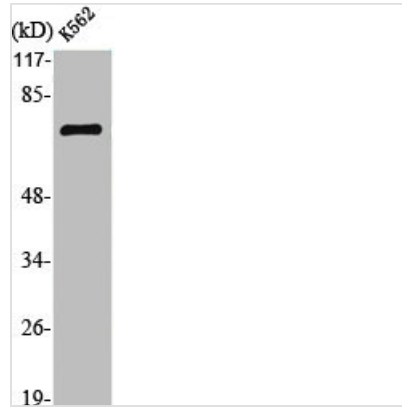
POU2F1 Antibody

| | |
|----------------------------|---|
| Product Code | CSB-PA003505 |
| Storage | Upon receipt, store at -20°C or -80°C. Avoid repeated freeze. |
| Uniprot No. | P14859 |
| Immunogen | Synthesized peptide derived from the N-terminal region of Human 40817. |
| Raised In | Rabbit |
| Species Reactivity | Human, Mouse |
| Tested Applications | WB, IHC, ELISA; WB:1:500-1:2000, IHC:1:100-1:300, ELISA:1:5000 |
| Form | Liquid |
| Conjugate | Non-conjugated |
| Storage Buffer | Liquid in PBS containing 50% glycerol, 0.5% BSA and 0.02% sodium azide. |
| Purification Method | The antibody was affinity-purified from rabbit antiserum by affinity-chromatography using epitope-specific immunogen. |
| Isotype | IgG |
| Alias | POU2F1; OCT1; OTF1; POU domain; class 2, transcription factor 1; NF-A1; Octamer-binding protein 1; Oct-1; Octamer-binding transcription factor 1; OTF-1 |
| Immunogen Species | Homo sapiens (Human) |
| Target Names | POU2F1 |

Image



Western Blot analysis of HeLa cells using Oct-1 Polyclonal Antibody



Western Blot analysis of K562 cells using Oct-1 Polyclonal Antibody

Usage

For Research Use Only. Not for use in diagnostic or therapeutic procedures.