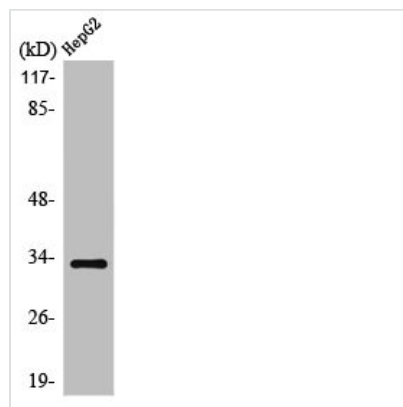




SLC25A21 Antibody

Product Code	CSB-PA003511
Storage	Upon receipt, store at -20°C or -80°C. Avoid repeated freeze.
Uniprot No.	Q9BQT8
Immunogen	Synthesized peptide derived from the Internal region of Human ODC.
Raised In	Rabbit
Species Reactivity	Human,Mouse,Rat
Tested Applications	WB, IHC, ELISA; WB:1:500-1:2000, IHC:1:100-1:300, ELISA:1:40000
Form	Liquid
Conjugate	Non-conjugated
Storage Buffer	Liquid in PBS containing 50% glycerol, 0.5% BSA and 0.02% sodium azide.
Purification Method	The antibody was affinity-purified from rabbit antiserum by affinity-chromatography using epitope-specific immunogen.
Isotype	IgG
Alias	SLC25A21; ODC; Mitochondrial 2-oxodicarboxylate carrier; Solute carrier family 25 member 21
Immunogen Species	Homo sapiens (Human)
Target Names	SLC25A21

Image



Western Blot analysis of HepG2 cells using ODC Polyclonal Antibody

Usage

For Research Use Only. Not for use in diagnostic or therapeutic procedures.