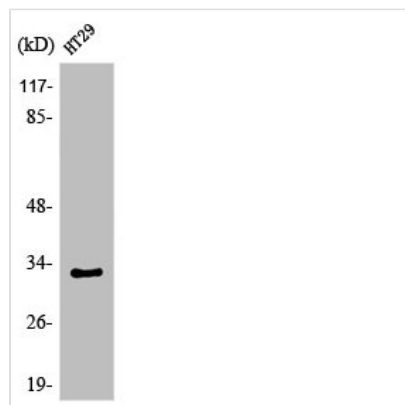




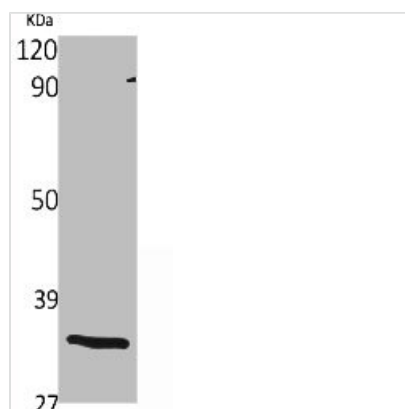
OR1S2/OR1S1 Antibody

Product Code	CSB-PA003530
Storage	Upon receipt, store at -20°C or -80°C. Avoid repeated freeze.
Uniprot No.	Q8NGQ3/Q8NH92
Immunogen	Synthesized peptide derived from the C-terminal region of Human Olfactory receptor 1S1/2.
Raised In	Rabbit
Species Reactivity	Human
Tested Applications	WB, IF, ELISA; WB:1:500-1:2000, IF:1:200-1:1000, ELISA:1:20000
Form	Liquid
Conjugate	Non-conjugated
Storage Buffer	Liquid in PBS containing 50% glycerol, 0.5% BSA and 0.02% sodium azide.
Purification Method	The antibody was affinity-purified from rabbit antiserum by affinity-chromatography using epitope-specific immunogen.
Isotype	IgG
Alias	OR1S2; Olfactory receptor 1S2; Olfactory receptor OR11-231; OR1S1; Olfactory receptor 1S1; Olfactory receptor OR11-232
Immunogen Species	Homo sapiens (Human)
Target Names	OR1S2/OR1S1

Image



Western Blot analysis of HuvEc cells using Olfactory receptor 1S1/2 Polyclonal Antibody



Western Blot analysis of various cells using
Olfactory receptor 1S1/2 Polyclonal Antibody