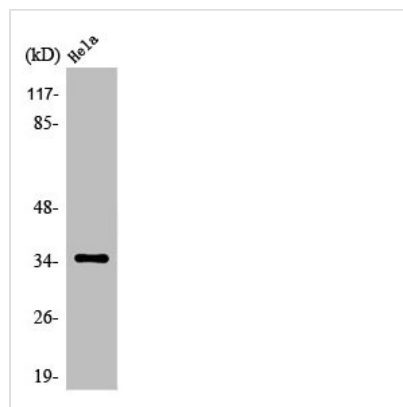




OR52E6 Antibody

| | |
|----------------------------|---|
| Product Code | CSB-PA003568 |
| Storage | Upon receipt, store at -20°C or -80°C. Avoid repeated freeze. |
| Uniprot No. | Q96RD3 |
| Immunogen | Synthesized peptide derived from the C-terminal region of Human Olfactory receptor 52E6. |
| Raised In | Rabbit |
| Species Reactivity | Human |
| Tested Applications | WB, ELISA; WB:1:500-1:2000, ELISA:1:10000 |
| Form | Liquid |
| Conjugate | Non-conjugated |
| Storage Buffer | Liquid in PBS containing 50% glycerol, 0.5% BSA and 0.02% sodium azide. |
| Purification Method | The antibody was affinity-purified from rabbit antiserum by affinity-chromatography using epitope-specific immunogen. |
| Isotype | IgG |
| Alias | OR52E6; Olfactory receptor 52E6; Olfactory receptor OR11-58 |
| Immunogen Species | Homo sapiens (Human) |
| Target Names | OR52E6 |

Image



Western Blot analysis of MCF7 cells using Olfactory receptor 52E6 Polyclonal Antibody