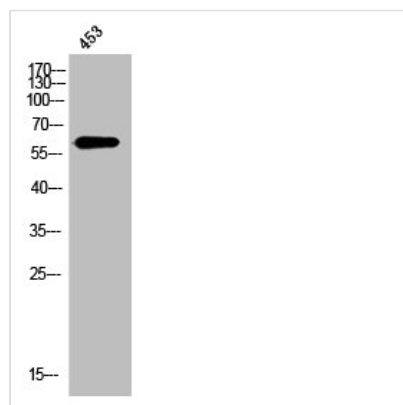




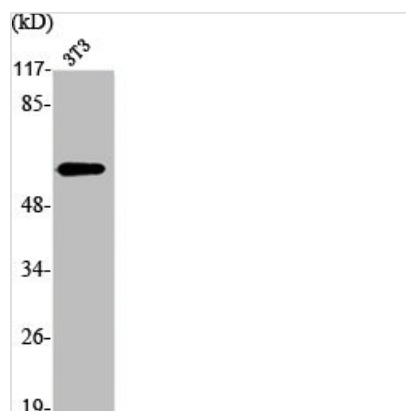
SPP1 Antibody

Product Code	CSB-PA003599
Storage	Upon receipt, store at -20°C or -80°C. Avoid repeated freeze.
Uniprot No.	P10451
Immunogen	Synthesized peptide derived from the C-terminal region of Human OPN.
Raised In	Rabbit
Species Reactivity	Human,Mouse,Rat
Tested Applications	WB, IHC, ELISA; WB:1:500-1:2000, IHC:1:100-1:300, ELISA:1:20000
Form	Liquid
Conjugate	Non-conjugated
Storage Buffer	Liquid in PBS containing 50% glycerol, 0.5% BSA and 0.02% sodium azide.
Purification Method	The antibody was affinity-purified from rabbit antiserum by affinity-chromatography using epitope-specific immunogen.
Isotype	IgG
Alias	SPP1; BNSP; OPN; PSEC0156; Osteopontin; Bone sialoprotein 1; Nephropontin; Secreted phosphoprotein 1; SPP-1; Urinary stone protein; Uropontin
Immunogen Species	Homo sapiens (Human)
Target Names	SPP1

Image



Western Blot analysis of 453 cells using OPN Polyclonal Antibody



Western Blot analysis of NIH-3T3 cells using
OPN Polyclonal Antibody