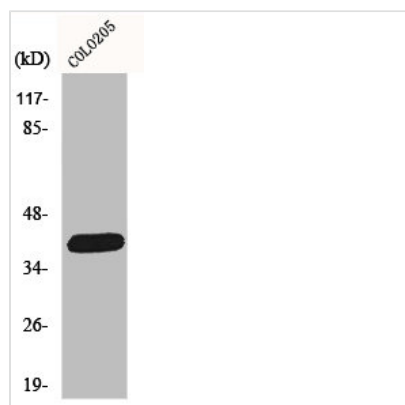




SLC22A18 Antibody

Product Code	CSB-PA003603
Storage	Upon receipt, store at -20°C or -80°C. Avoid repeated freeze.
Uniprot No.	Q96BI1
Immunogen	Synthesized peptide derived from the C-terminal region of Human ORCTL2.
Raised In	Rabbit
Species Reactivity	Human
Tested Applications	WB, IF, ELISA; WB:1:500-1:2000, IF:1:200-1:1000, ELISA:1:10000
Form	Liquid
Conjugate	Non-conjugated
Storage Buffer	Liquid in PBS containing 50% glycerol, 0.5% BSA and 0.02% sodium azide.
Purification Method	The antibody was affinity-purified from rabbit antiserum by affinity-chromatography using epitope-specific immunogen.
Isotype	IgG
Alias	SLC22A18; BWR1A; BWSCR1A; HET; IMPT1; ITM; ORCTL2; SLC22A1L; TSSC5; Solute carrier family 22 member 18; Beckwith-Wiedemann syndrome chromosomal region 1 candidate gene A protein; Efflux transporter-like protein; Imprinted multi-membrane-spa
Immunogen Species	Homo sapiens (Human)
Target Names	SLC22A18

Image



Western Blot analysis of COLO205 cells using ORCTL2 Polyclonal Antibody