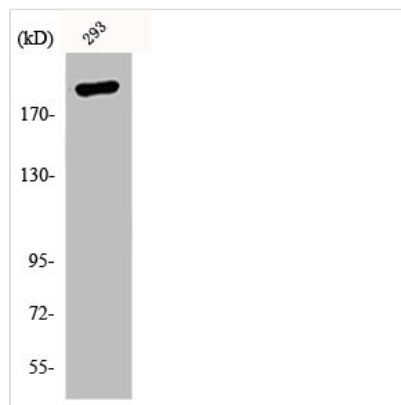




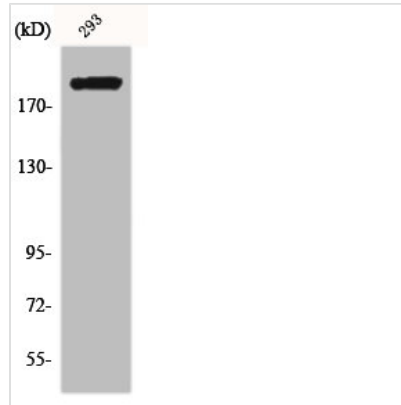
EP300 Antibody

Product Code	CSB-PA003640
Storage	Upon receipt, store at -20°C or -80°C. Avoid repeated freeze.
Uniprot No.	Q09472
Immunogen	Synthesized peptide derived from Human p300 around the non-phosphorylation site of S89.
Raised In	Rabbit
Species Reactivity	Human,Mouse,Rat
Tested Applications	WB, IHC, ELISA; WB:1:500-1:2000, IHC:1:100-1:300, ELISA:1:5000
Form	Liquid
Conjugate	Non-conjugated
Storage Buffer	Liquid in PBS containing 50% glycerol, 0.5% BSA and 0.02% sodium azide.
Purification Method	The antibody was affinity-purified from rabbit antiserum by affinity-chromatography using epitope-specific immunogen.
Isotype	IgG
Alias	EP300; P300; Histone acetyltransferase p300; p300 HAT; E1A-associated protein p300
Immunogen Species	Homo sapiens (Human)
Target Names	EP300

Image



Western Blot analysis of 293 cells using p300 Polyclonal Antibody



Western Blot analysis of 293 cells using p300 Polyclonal Antibody

Usage

For Research Use Only. Not for use in diagnostic or therapeutic procedures.