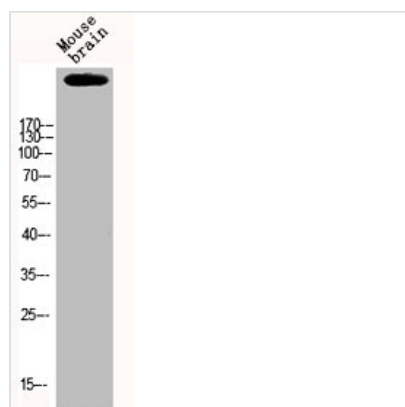




EP300 Antibody

Product Code	CSB-PA003659
Storage	Upon receipt, store at -20°C or -80°C. Avoid repeated freeze.
Uniprot No.	Q09472
Immunogen	Synthesized peptide derived from the N-terminal region of Human p300.
Raised In	Rabbit
Species Reactivity	Human
Tested Applications	WB, IHC, ELISA; WB:1:500-1:2000, IHC:1:100-1:300, ELISA:1:10000
Form	Liquid
Conjugate	Non-conjugated
Storage Buffer	Liquid in PBS containing 50% glycerol, 0.5% BSA and 0.02% sodium azide.
Purification Method	The antibody was affinity-purified from rabbit antiserum by affinity-chromatography using epitope-specific immunogen.
Isotype	IgG
Alias	EP300; P300; Histone acetyltransferase p300; p300 HAT; E1A-associated protein p300
Immunogen Species	Homo sapiens (Human)
Target Names	EP300

Image



Western Blot analysis of MOUSE-BRAIN cells using p300 Polyclonal Antibody