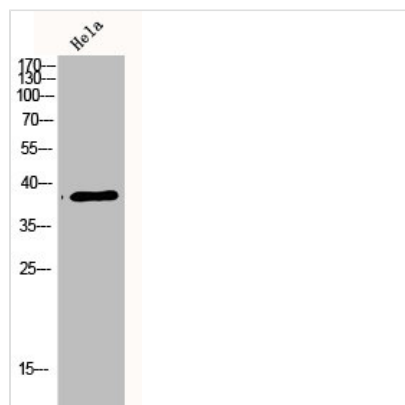




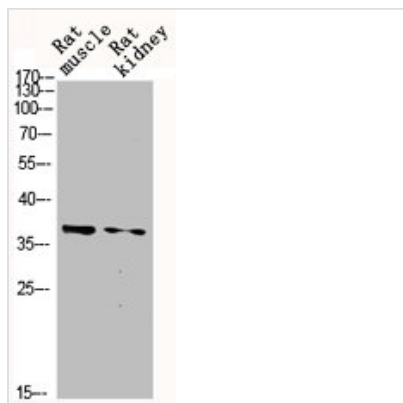
# MAPK14 Antibody

<b>Product Code</b>	CSB-PA003662
<b>Storage</b>	Upon receipt, store at -20°C or -80°C. Avoid repeated freeze.
<b>Uniprot No.</b>	Q16539
<b>Immunogen</b>	Synthesized peptide derived from Human p38 around the non-phosphorylation site of Y323.
<b>Raised In</b>	Rabbit
<b>Species Reactivity</b>	Human,Mouse,Rat
<b>Tested Applications</b>	WB, IHC, IF, ELISA; WB:1:500-1:2000, IHC:1:100-1:300, IF:1:200-1:1000, ELISA:1:5000
<b>Form</b>	Liquid
<b>Conjugate</b>	Non-conjugated
<b>Storage Buffer</b>	Liquid in PBS containing 50% glycerol, 0.5% BSA and 0.02% sodium azide.
<b>Purification Method</b>	The antibody was affinity-purified from rabbit antiserum by affinity-chromatography using epitope-specific immunogen.
<b>Isotype</b>	IgG
<b>Alias</b>	MAPK14; CSBP; CSBP1; CSBP2; CSPB1; MXI2; SAPK2A; Mitogen-activated protein kinase 14; MAP kinase 14; MAPK 14; Cytokine suppressive anti-inflammatory drug-binding protein; CSAID-binding protein; CSBP; MAP kinase MXI2; MAX-interacting protein
<b>Immunogen Species</b>	Homo sapiens (Human)
<b>Target Names</b>	MAPK14

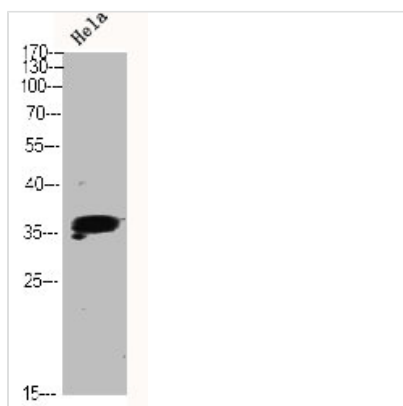
## Image



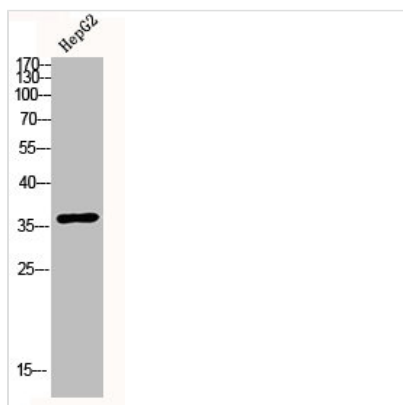
Western Blot analysis of hela cells using p38 Polyclonal Antibody



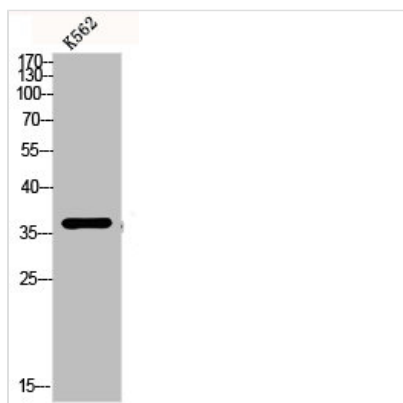
Western Blot analysis of RAT-MUSCLE RAT-KIDNEY cells using p38 Polyclonal Antibody



Western Blot analysis of HELA using p38 Polyclonal Antibody.



Western Blot analysis of HEPG2 using p38 Polyclonal Antibody



Western blot analysis of K562 lysis using p38 antibody.