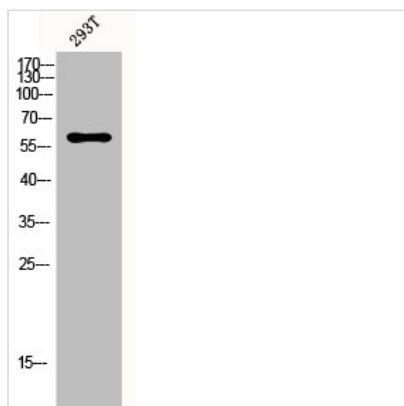




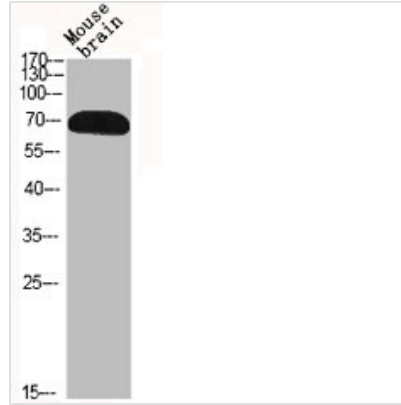
RPS6KB1 Antibody

Product Code	CSB-PA003686
Storage	Upon receipt, store at -20°C or -80°C. Avoid repeated freeze.
Uniprot No.	P23443
Immunogen	Synthesized peptide derived from Human p70 S6 kinase α around the non-phosphorylation site of T229.
Raised In	Rabbit
Species Reactivity	Human, Mouse, Rat
Tested Applications	WB, IHC, IF, ELISA; WB:1:500-1:2000, IHC:1:100-1:300, IF:1:200-1:1000, ELISA:1:40000
Form	Liquid
Conjugate	Non-conjugated
Storage Buffer	Liquid in PBS containing 50% glycerol, 0.5% BSA and 0.02% sodium azide.
Purification Method	The antibody was affinity-purified from rabbit antiserum by affinity-chromatography using epitope-specific immunogen.
Isotype	IgG
Alias	RPS6KB1; STK14A; Ribosomal protein S6 kinase beta-1; S6K-beta-1; S6K1; 70 kDa ribosomal protein S6 kinase 1; P70S6K1; p70-S6K 1; Ribosomal protein S6 kinase I; Serine/threonine-protein kinase 14A; p70 ribosomal S6 kinase alpha; p70 S6 kinas
Immunogen Species	Homo sapiens (Human)
Target Names	RPS6KB1

Image



Western Blot analysis of 293T cells using p70 S6 kinase α Polyclonal Antibody



Western Blot analysis of MOUSE-BRAIN cells using p70 S6 kinase α Polyclonal Antibody

Usage

For Research Use Only. Not for use in diagnostic or therapeutic procedures.