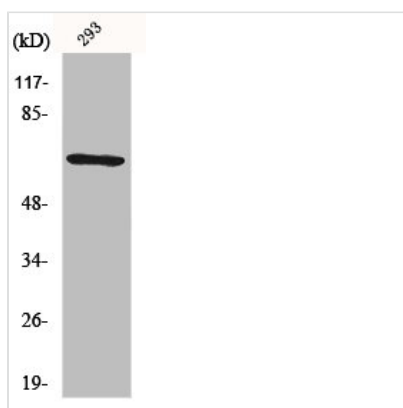




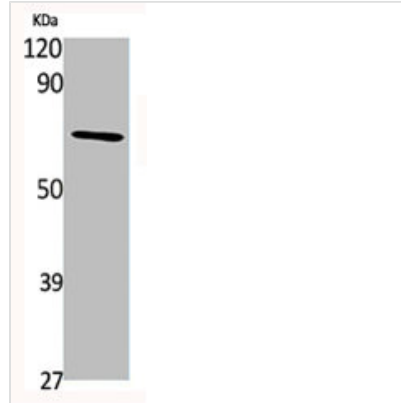
# TAF6L Antibody

<b>Product Code</b>	CSB-PA003697
<b>Storage</b>	Upon receipt, store at -20°C or -80°C. Avoid repeated freeze.
<b>Uniprot No.</b>	Q9Y6J9
<b>Immunogen</b>	Synthesized peptide derived from the N-terminal region of Human PAF65 $\alpha$ .
<b>Raised In</b>	Rabbit
<b>Species Reactivity</b>	Human, Mouse
<b>Tested Applications</b>	WB, IHC, ELISA; WB:1:500-1:2000, IHC:1:100-1:300, ELISA:1:40000
<b>Form</b>	Liquid
<b>Conjugate</b>	Non-conjugated
<b>Storage Buffer</b>	Liquid in PBS containing 50% glycerol, 0.5% BSA and 0.02% sodium azide.
<b>Purification Method</b>	The antibody was affinity-purified from rabbit antiserum by affinity-chromatography using epitope-specific immunogen.
<b>Isotype</b>	IgG
<b>Alias</b>	TAF6L; PAF65A; TAF6-like RNA polymerase II p300/CBP-associated factor-associated factor 65 kDa subunit 6L; PCAF-associated factor 65-alpha; PAF65-alpha
<b>Immunogen Species</b>	Homo sapiens (Human)
<b>Target Names</b>	TAF6L

## Image



Western Blot analysis of 293 cells using PAF65 $\alpha$  Polyclonal Antibody



Western Blot analysis of various cells using PAF65 $\alpha$  Polyclonal Antibody

### Usage

For Research Use Only. Not for use in diagnostic or therapeutic procedures.