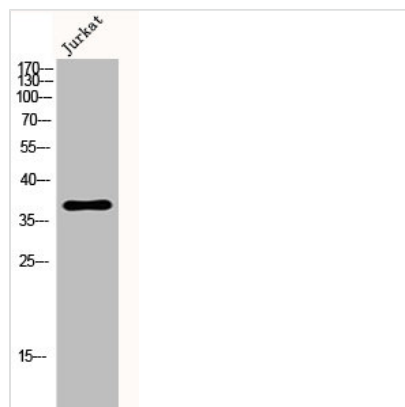




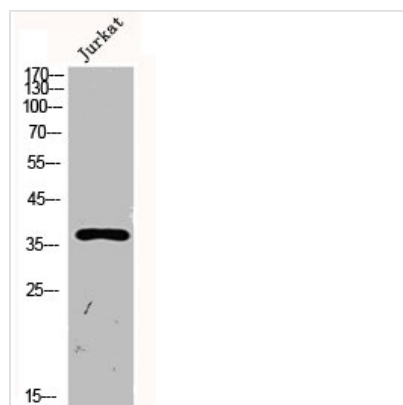
SERPINE1 Antibody

Product Code	CSB-PA003699
Storage	Upon receipt, store at -20°C or -80°C. Avoid repeated freeze.
Uniprot No.	P05121
Immunogen	Synthesized peptide derived from the Internal region of Human PAI-1.
Raised In	Rabbit
Species Reactivity	Human,Mouse,Rat
Tested Applications	WB, IHC, ELISA; WB:1:500-1:2000, IHC:1:100-1:300, ELISA:1:20000
Form	Liquid
Conjugate	Non-conjugated
Storage Buffer	Liquid in PBS containing 50% glycerol, 0.5% BSA and 0.02% sodium azide.
Purification Method	The antibody was affinity-purified from rabbit antiserum by affinity-chromatography using epitope-specific immunogen.
Isotype	IgG
Alias	SERPINE1; PAI1; PLANH1; Plasminogen activator inhibitor 1; PAI; PAI-1; Endothelial plasminogen activator inhibitor; Serpin E1
Immunogen Species	Homo sapiens (Human)
Target Names	SERPINE1

Image



Western Blot analysis of Jurkat cells using PAI-1 Polyclonal Antibody



Western Blot analysis of Jurkat cells using PAI-1 Polyclonal Antibody