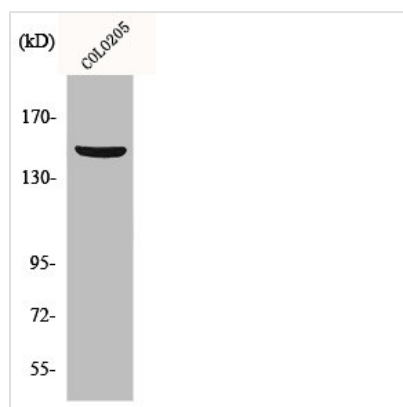




PARD3 Antibody

Product Code	CSB-PA003706
Storage	Upon receipt, store at -20°C or -80°C. Avoid repeated freeze.
Uniprot No.	Q8TEW0
Immunogen	Synthesized peptide derived from the C-terminal region of Human PARD3A.
Raised In	Rabbit
Species Reactivity	Human, Mouse, Rat
Tested Applications	WB, IHC, IF, ELISA; WB:1:500-1:2000, IHC:1:100-1:300, IF:1:200-1:1000, ELISA:1:20000
Form	Liquid
Conjugate	Non-conjugated
Storage Buffer	Liquid in PBS containing 50% glycerol, 0.5% BSA and 0.02% sodium azide.
Purification Method	The antibody was affinity-purified from rabbit antiserum by affinity-chromatography using epitope-specific immunogen.
Isotype	IgG
Alias	PARD3; PAR3; PAR3A; Partitioning defective 3 homolog; PAR-3; PARD-3; Atypical PKC isotype-specific-interacting protein; ASIP; CTCL tumor antigen se2-5; PAR3-alpha
Immunogen Species	Homo sapiens (Human)
Target Names	PARD3

Image



Western Blot analysis of COLO205 cells using PARD3A Polyclonal Antibody

Usage For Research Use Only. Not for use in diagnostic or therapeutic procedures.