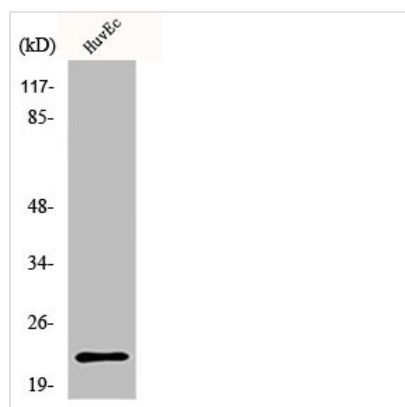




PARK7 Antibody

Product Code	CSB-PA003707
Storage	Upon receipt, store at -20°C or -80°C. Avoid repeated freeze.
Uniprot No.	Q99497
Immunogen	Synthesized peptide derived from the Internal region of Human PARK7.
Raised In	Rabbit
Species Reactivity	Human, Mouse
Tested Applications	WB, IHC, IF, ELISA; WB:1:500-1:2000, IHC:1:100-1:300, IF:1:200-1:1000, ELISA:1:10000
Form	Liquid
Conjugate	Non-conjugated
Storage Buffer	Liquid in PBS containing 50% glycerol, 0.5% BSA and 0.02% sodium azide.
Purification Method	The antibody was affinity-purified from rabbit antiserum by affinity-chromatography using epitope-specific immunogen.
Isotype	IgG
Alias	PARK7; Protein DJ-1; Oncogene DJ1; Parkinson disease protein 7
Immunogen Species	Homo sapiens (Human)
Target Names	PARK7

Image



Western Blot analysis of HuvEc cells using PARK7 Polyclonal Antibody