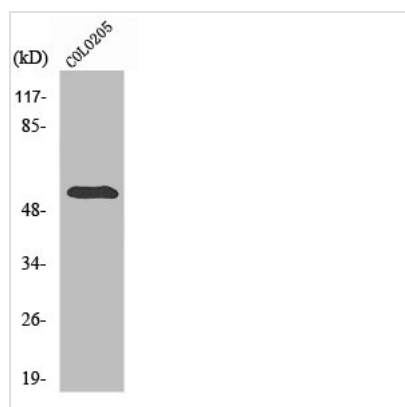




STEAP3 Antibody

Product Code	CSB-PA003760
Storage	Upon receipt, store at -20°C or -80°C. Avoid repeated freeze.
Uniprot No.	Q658P3
Immunogen	Synthesized peptide derived from the C-terminal region of Human pHyde.
Raised In	Rabbit
Species Reactivity	Human, Mouse, Rat
Tested Applications	WB, IHC, IF, ELISA; WB:1:500-1:2000, IHC:1:100-1:300, IF:1:200-1:1000, ELISA:1:10000
Form	Liquid
Conjugate	Non-conjugated
Storage Buffer	Liquid in PBS containing 50% glycerol, 0.5% BSA and 0.02% sodium azide.
Purification Method	The antibody was affinity-purified from rabbit antiserum by affinity-chromatography using epitope-specific immunogen.
Isotype	IgG
Alias	STEAP3; TSAP6; Metalloreductase STEAP3; Dudulin-2; Six-transmembrane epithelial antigen of prostate 3; Tumor suppressor-activated pathway protein 6; hTSAP6; pHyde; hpHyde
Immunogen Species	Homo sapiens (Human)
Target Names	STEAP3

Image



Western Blot analysis of COLO205 cells using pHyde Polyclonal Antibody

Usage For Research Use Only. Not for use in diagnostic or therapeutic procedures.