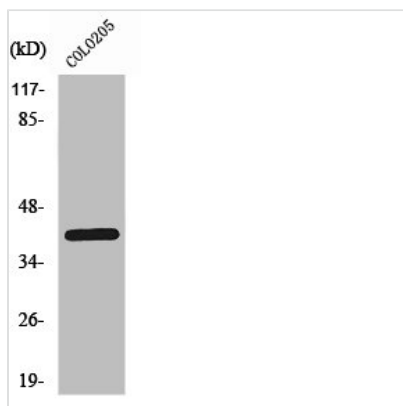




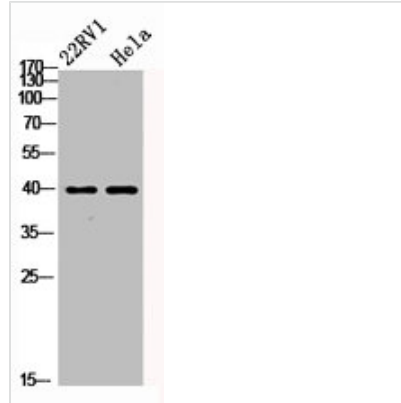
# PRKACA/PRKACB/PRKACG Antibody

|                            |                                                                                                                                                                                                                                         |
|----------------------------|-----------------------------------------------------------------------------------------------------------------------------------------------------------------------------------------------------------------------------------------|
| <b>Product Code</b>        | CSB-PA003799                                                                                                                                                                                                                            |
| <b>Storage</b>             | Upon receipt, store at -20°C or -80°C. Avoid repeated freeze.                                                                                                                                                                           |
| <b>Uniprot No.</b>         | P17612/P22694/P22612                                                                                                                                                                                                                    |
| <b>Immunogen</b>           | Synthesized peptide derived from Human PKA $\alpha/\beta/\gamma$ cat around the non-phosphorylation site of T198.                                                                                                                       |
| <b>Raised In</b>           | Rabbit                                                                                                                                                                                                                                  |
| <b>Species Reactivity</b>  | Human, Mouse, Rat                                                                                                                                                                                                                       |
| <b>Tested Applications</b> | WB, IHC, IF, ELISA; WB:1:500-1:2000, IHC:1:100-1:300, IF:1:200-1:1000, ELISA:1:20000                                                                                                                                                    |
| <b>Form</b>                | Liquid                                                                                                                                                                                                                                  |
| <b>Conjugate</b>           | Non-conjugated                                                                                                                                                                                                                          |
| <b>Storage Buffer</b>      | Liquid in PBS containing 50% glycerol, 0.5% BSA and 0.02% sodium azide.                                                                                                                                                                 |
| <b>Purification Method</b> | The antibody was affinity-purified from rabbit antiserum by affinity-chromatography using epitope-specific immunogen.                                                                                                                   |
| <b>Isotype</b>             | IgG                                                                                                                                                                                                                                     |
| <b>Alias</b>               | PRKACA; PKACA; cAMP-dependent protein kinase catalytic subunit alpha; PKA C-alpha; PRKACB; cAMP-dependent protein kinase catalytic subunit beta; PKA C-beta; PRKACG; cAMP-dependent protein kinase catalytic subunit gamma; PKA C-gamma |
| <b>Immunogen Species</b>   | Homo sapiens (Human)                                                                                                                                                                                                                    |
| <b>Target Names</b>        | PRKACA/PRKACB/PRKACG                                                                                                                                                                                                                    |

## Image



Western Blot analysis of COLO205 cells using PKA $\alpha/\beta/\gamma$  cat Polyclonal Antibody



Western Blot analysis of 22RV1 HELA cells using PKA $\alpha/\beta/\gamma$  cat Polyclonal Antibody

## Usage

For Research Use Only. Not for use in diagnostic or therapeutic procedures.