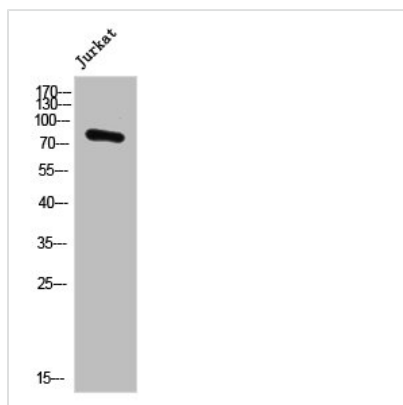




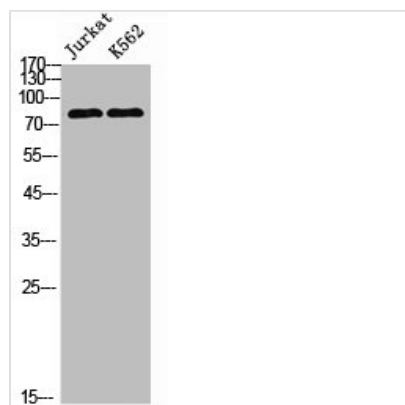
POLR3E Antibody

Product Code	CSB-PA003830
Storage	Upon receipt, store at -20°C or -80°C. Avoid repeated freeze.
Uniprot No.	Q9NVU0
Immunogen	Synthesized peptide derived from the Internal region of Human POLR3E.
Raised In	Rabbit
Species Reactivity	Human, Mouse
Tested Applications	WB, IHC, IF, ELISA; WB:1:500-1:2000, IHC:1:100-1:300, IF:1:200-1:1000, ELISA:1:40000
Form	Liquid
Conjugate	Non-conjugated
Storage Buffer	Liquid in PBS containing 50% glycerol, 0.5% BSA and 0.02% sodium azide.
Purification Method	The antibody was affinity-purified from rabbit antiserum by affinity-chromatography using epitope-specific immunogen.
Isotype	IgG
Alias	POLR3E; KIAA1452; DNA-directed RNA polymerase III subunit RPC5; RNA polymerase III subunit C5; DNA-directed RNA polymerase III 80 kDa polypeptide
Immunogen Species	Homo sapiens (Human)
Target Names	POLR3E

Image



Western Blot analysis of JK cells using POLR3E Polyclonal Antibody



Western Blot analysis of Jurkat K562 cells using POLR3E Polyclonal Antibody