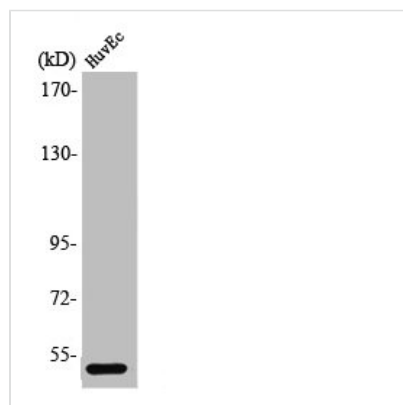




PPP2R3C Antibody

Product Code	CSB-PA003843
Storage	Upon receipt, store at -20°C or -80°C. Avoid repeated freeze.
Uniprot No.	Q969Q6
Immunogen	Synthesized peptide derived from the Internal region of Human PPP2R3C.
Raised In	Rabbit
Species Reactivity	Human,Mouse,Rat
Tested Applications	WB, ELISA; WB:1:500-1:2000, ELISA:1:20000
Form	Liquid
Conjugate	Non-conjugated
Storage Buffer	Liquid in PBS containing 50% glycerol, 0.5% BSA and 0.02% sodium azide.
Purification Method	The antibody was affinity-purified from rabbit antiserum by affinity-chromatography using epitope-specific immunogen.
Isotype	IgG
Alias	PPP2R3C; C14orf10; G5PR; Serine/threonine-protein phosphatase 2A regulatory subunit B' subunit gamma; Protein phosphatase subunit G5PR; Rhabdomyosarcoma antigen MU-RMS-40.6A/6C
Immunogen Species	Homo sapiens (Human)
Target Names	PPP2R3C

Image



Western Blot analysis of HuvEc cells using PPP2R3C Polyclonal Antibody