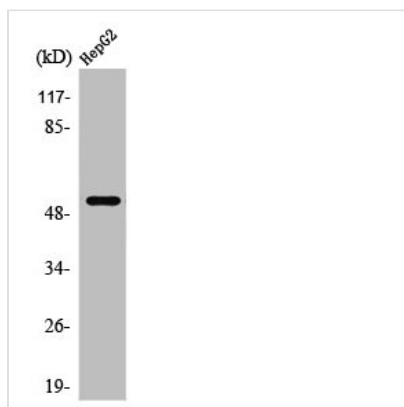




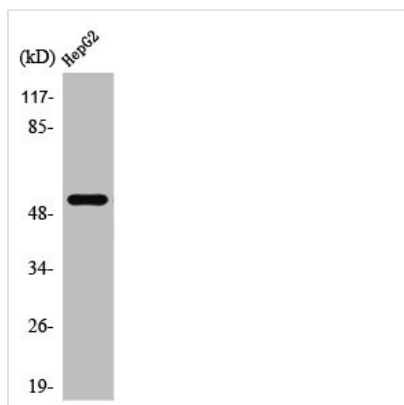
PRPH Antibody

Product Code	CSB-PA003858
Storage	Upon receipt, store at -20°C or -80°C. Avoid repeated freeze.
Uniprot No.	P41219
Immunogen	Synthesized peptide derived from the C-terminal region of Human PRPH.
Raised In	Rabbit
Species Reactivity	Human,Rat
Tested Applications	WB, IHC, ELISA; WB:1:500-1:2000, IHC:1:100-1:300, ELISA:1:20000
Form	Liquid
Conjugate	Non-conjugated
Storage Buffer	Liquid in PBS containing 50% glycerol, 0.5% BSA and 0.02% sodium azide.
Purification Method	The antibody was affinity-purified from rabbit antiserum by affinity-chromatography using epitope-specific immunogen.
Isotype	IgG
Alias	PRPH; NEF4; PRPH1; Peripherin; Neurofilament 4
Immunogen Species	Homo sapiens (Human)
Target Names	PRPH

Image



Western Blot analysis of HepG2 cells using PRPH Polyclonal Antibody



Western Blot analysis of HepG2 cells using PRPH Polyclonal Antibody



Usage

For Research Use Only. Not for use in diagnostic or therapeutic procedures.