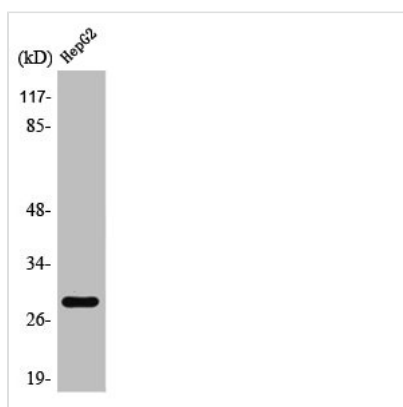




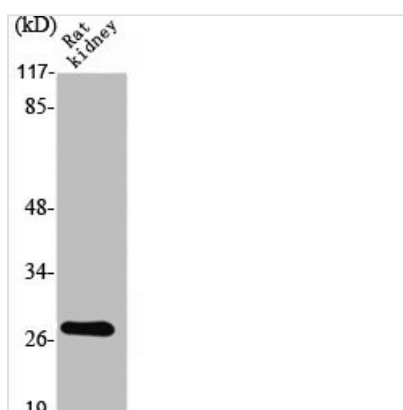
PSCA Antibody

Product Code	CSB-PA003863
Storage	Upon receipt, store at -20°C or -80°C. Avoid repeated freeze.
Uniprot No.	O43653
Immunogen	Synthesized peptide derived from the Internal region of Human PSCA.
Raised In	Rabbit
Species Reactivity	Human, Mouse
Tested Applications	WB, ELISA; WB:1:500-1:2000, ELISA:1:20000
Form	Liquid
Conjugate	Non-conjugated
Storage Buffer	Liquid in PBS containing 50% glycerol, 0.5% BSA and 0.02% sodium azide.
Purification Method	The antibody was affinity-purified from rabbit antiserum by affinity-chromatography using epitope-specific immunogen.
Isotype	IgG
Alias	PSCA; Prostate stem cell antigen
Immunogen Species	Homo sapiens (Human)
Target Names	PSCA

Image



Western Blot analysis of HepG2 cells using PSCA Polyclonal Antibody



Western Blot analysis of RAT-KIDNEY cells using PSCA Polyclonal Antibody



Usage

For Research Use Only. Not for use in diagnostic or therapeutic procedures.