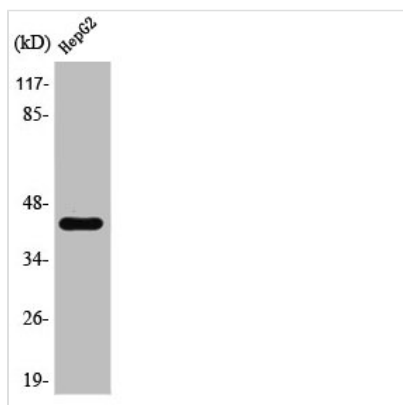




PSMC6 Antibody

Product Code	CSB-PA003865
Storage	Upon receipt, store at -20°C or -80°C. Avoid repeated freeze.
Uniprot No.	P62333
Immunogen	Synthesized peptide derived from the Internal region of Human PSMC6.
Raised In	Rabbit
Species Reactivity	Human, Mouse
Tested Applications	WB, ELISA; WB:1:500-1:2000, ELISA:1:40000
Form	Liquid
Conjugate	Non-conjugated
Storage Buffer	Liquid in PBS containing 50% glycerol, 0.5% BSA and 0.02% sodium azide.
Purification Method	The antibody was affinity-purified from rabbit antiserum by affinity-chromatography using epitope-specific immunogen.
Isotype	IgG
Alias	PSMC6; SUG2; 26S protease regulatory subunit 10B; 26S proteasome AAA-ATPase subunit RPT4; Proteasome 26S subunit ATPase 6; Proteasome subunit p42
Immunogen Species	Homo sapiens (Human)
Target Names	PSMC6

Image



Western Blot analysis of RAW264.7 cells using PSMC6 Polyclonal Antibody

Usage For Research Use Only. Not for use in diagnostic or therapeutic procedures.