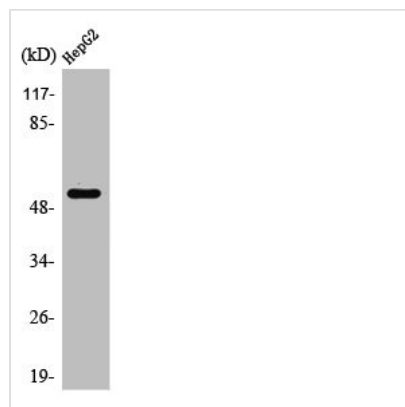




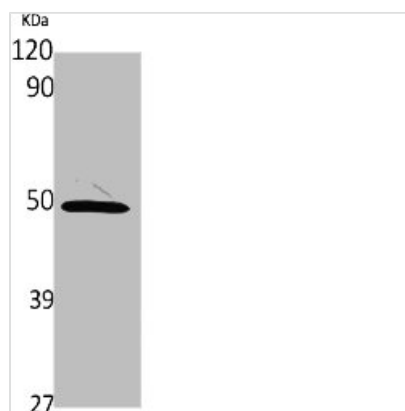
PSMD12 Antibody

Product Code	CSB-PA003868
Storage	Upon receipt, store at -20°C or -80°C. Avoid repeated freeze.
Uniprot No.	O00232
Immunogen	Synthesized peptide derived from the Internal region of Human PSMD12.
Raised In	Rabbit
Species Reactivity	Human,Mouse,Rat
Tested Applications	WB, IHC, ELISA; WB:1:500-1:2000, IHC:1:100-1:300, ELISA:1:40000
Form	Liquid
Conjugate	Non-conjugated
Storage Buffer	Liquid in PBS containing 50% glycerol, 0.5% BSA and 0.02% sodium azide.
Purification Method	The antibody was affinity-purified from rabbit antiserum by affinity-chromatography using epitope-specific immunogen.
Isotype	IgG
Alias	PSMD12; 26S proteasome non-ATPase regulatory subunit 12; 26S proteasome regulatory subunit RPN5; 26S proteasome regulatory subunit p55
Immunogen Species	Homo sapiens (Human)
Target Names	PSMD12

Image



Western Blot analysis of HepG2 cells using PSMD12 Polyclonal Antibody



Western Blot analysis of various cells using
PSMD12 Polyclonal Antibody