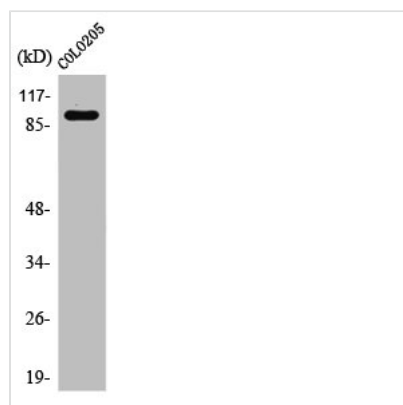




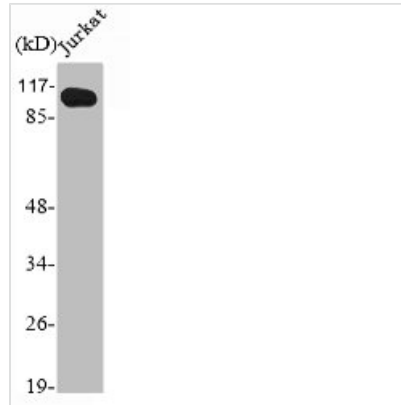
PSMD2 Antibody

Product Code	CSB-PA003869
Storage	Upon receipt, store at -20°C or -80°C. Avoid repeated freeze.
Uniprot No.	Q13200
Immunogen	Synthesized peptide derived from the N-terminal region of Human PSMD2.
Raised In	Rabbit
Species Reactivity	Human,Mouse,Rat
Tested Applications	WB, IHC, ELISA; WB:1:500-1:2000, IHC:1:100-1:300, ELISA:1:20000
Form	Liquid
Conjugate	Non-conjugated
Storage Buffer	Liquid in PBS containing 50% glycerol, 0.5% BSA and 0.02% sodium azide.
Purification Method	The antibody was affinity-purified from rabbit antiserum by affinity-chromatography using epitope-specific immunogen.
Isotype	IgG
Alias	PSMD2; TRAP2; 26S proteasome non-ATPase regulatory subunit 2; 26S proteasome regulatory subunit RPN1; 26S proteasome regulatory subunit S2; 26S proteasome subunit p97; Protein 55.11; Tumor necrosis factor type 1 receptor-associated protein
Immunogen Species	Homo sapiens (Human)
Target Names	PSMD2

Image



Western Blot analysis of 293 cells using PSMD2 Polyclonal Antibody



Western Blot analysis of Jurkat cells using PSMD2 Polyclonal Antibody

Usage

For Research Use Only. Not for use in diagnostic or therapeutic procedures.